



# CENTRAL HEALTH

## Our Vision

Central Texas is a model healthy community.

## Our Mission

By caring for those who need it most, Central Health improves the health of our community.

## Our Values

Central Health will achieve excellence through:

*Stewardship* - We maintain public trust through fiscal discipline and open and transparent communication.

*Innovation* - We create solutions to improve healthcare access.

*Respect* - We honor our relationship with those we serve and those with whom we work.

*Collaboration* - We partner with others to improve the health of our community.

## PUBLIC HEARING AND BOARD OF MANAGERS MEETING

**Wednesday, December 16, 2020, 5:30 p.m.**

**via toll-free videoconference<sup>1</sup>**

Members of the public may observe and participate in the meeting by connecting to the Ring Central meeting link listed below (copy and paste into your web browser):

<https://meetings.ringcentral.com/j/1481468665?pwd=U0IUc1BnUElwWTRCSEZtaEhndTkWQT09>

Password: 654154

Members of the public may also listen and participate by telephone only:

Dial: (888) 501-0031

Meeting ID: 148 146 8665

Password: 654154

## PUBLIC HEARING

1. Receive public comment on the proposed mandatory payment rate to be assessed on institutional healthcare providers during fiscal year 2021 under the local healthcare provider participation program (LPPF) in Travis County and how the revenue derived from those payments is to be spent, as required by Texas Health & Safety Code §298E.101.

A member of the public who wishes to make comments during Public Communication must properly register with Central Health **no later than 4:00 p.m. on December 16, 2020**. Registration can be completed in one of two ways:

- Complete the virtual sign-in form at <https://www.centralhealth.net/meeting-sign-up/>, or
- Call 512-978-9190. Please leave a voice message with your full name and your request to comment via telephone at the meeting.

## **PUBLIC COMMUNICATION**

Central Health will conduct Public Communication in the same manner as it has been conducted at in-person meetings, including setting a fixed amount of time per person to speak and limiting Board responses to public inquiries, if any, to statements of specific factual information or existing policy.

## **CONSENT AGENDA**

All matters listed under the CONSENT AGENDA will be considered by the Board of Managers to be routine and will be enacted by one motion. There will be no separate discussion of these items unless members of the Board request specific items be moved from the CONSENT AGENDA to the REGULAR AGENDA for discussion prior to the vote on the motion to adopt the CONSENT AGENDA.

- C1. Receive the Quarterly Investment Report and ratify Central Health Investments for November 2020.
- C2. Receive a report on and accept the preliminary November 2020 financial statements for Central Health and the Community Care Collaborative as recommended by the Budget and Finance Committee.
- C3. Approve the reappointment of Pilar Sanchez and Tom Coopwood, M.D., to the CommUnityCare Health Centers Board of Directors as recommended by the Executive Committee.

## **REGULAR AGENDA<sup>2</sup>**

1. Discuss and take appropriate action on the proposed mandatory payment rate to be assessed on institutional healthcare providers during fiscal year 2021 under the local healthcare provider participation program (LPPF) in Travis County and how the revenue derived from those payments is to be spent, as required by Texas Health & Safety Code §298E.151. (*Action Item*)
2. Discuss and take appropriate action on the Fiscal Year (FY) 2021 budget for Sendero Health Plans, Inc.<sup>3</sup> (*Action Item*)
3. Discuss and take appropriate action on Central Health owned or occupied real property and potential property for acquisition, lease, or development in Travis County, including possible amendment of the Ground Lease with the 2033 Higher Education Development Fund, next steps in the redevelopment of the Central Health Downtown Campus, administrative offices of Central Health Enterprise partners, and new developments in Eastern Travis County.<sup>4</sup> (*Action Item*)
4. Receive and discuss the 1115 Medicaid Waiver, Delivery System Reform Incentive Payment (DSRIP) projects, the Community Care Collaborative, and other healthcare delivery partners, programs, projects, and arrangements, including agreements with Ascension Texas.<sup>3,5</sup> (*Informational Item*)
5. Receive briefing from legal counsel, consider any settlement offers, and take appropriate action regarding *Larimen Wallace v. Travis County Healthcare District d/b/a Central Health*, Cause No. D-1-GN-20-006645 (Travis County Dist. Ct.).<sup>5</sup> (*Action Item*)
6. Confirm the next regular Board meeting date, time, and location. (*Informational Item*)

Notes:

- <sup>1</sup> By Emergency Executive Order of the Governor, issued March 16, 2020, Central Health may hold a videoconference meeting with no Board members present at a physical meeting location.
- <sup>2</sup> The Board of Managers may take items in an order that differs from the posted order and may consider any item posted on the agenda in a closed session if the item involves issues that require consideration in a closed session and the Board announces that the item will be considered during a closed session.
- <sup>3</sup> Possible closed session discussion under Texas Government Code §551.085 (Governing Board of Certain Providers of Health Care Services).
- <sup>4</sup> Possible closed session discussion under Texas Government Code §551.072 (Deliberation Regarding Real Property).
- <sup>5</sup> Possible closed session discussion under Texas Government Code §551.071 (Consultation with Attorney).

A recording of this meeting will be made available to the public through the Central Health website ([www.centralhealth.net](http://www.centralhealth.net)) as soon as possible after the meeting.

Any individual with a disability who plans to attend this meeting and requires auxiliary aids or services should notify Central Health at least two days in advance, so that appropriate arrangements can be made. Notice should be given to the Board Governance Manager by telephone at (512) 978-8049.

Cualquier persona con una discapacidad que planee asistir o ver esta reunión y requiera ayudas o servicios auxiliares debe notificar a Central Health con la mayor anticipación posible de la reunión, pero no menos de dos días de anticipación, para que se puedan hacer los arreglos apropiados. Se debe notificar al Gerente de Gobierno de la Junta por teléfono al (512) 978-8049.

Consecutive interpretation services from Spanish to English are available during Public Communication or when public comment is invited. Please notify the Board Governance Manager by telephone at (512) 978-8049 if services are needed.

Servicios de interpretación consecutiva del español al inglés están disponibles durante la Comunicación Pública o cuando se le invita al público a comentar. Notifique al Gerente de Gobierno de la Junta por teléfono al (512) 978-8049 si necesita servicios.



## CENTRAL HEALTH

### **Our Vision**

Central Texas is a model healthy community.

### **Our Mission**

By caring for those who need it most, Central Health improves the health of our community.

### **Our Values**

Central Health will achieve excellence through:

*Stewardship* - We maintain public trust through fiscal discipline and open and transparent communication.

*Innovation* - We create solutions to improve healthcare access.

*Respect* - We honor our relationship with those we serve and those with whom we work.

*Collaboration* - We partner with others to improve the health of our community.

## **PUBLIC HEARING**

**December 16, 2020**

## **AGENDA ITEM 1**

Receive public comment on the proposed mandatory payment rate to be assessed on institutional healthcare providers during fiscal year 2021 under the local healthcare provider participation program (LPPF) in Travis County, and how the revenue derived from those payments is to be spent, as required by Texas Health & Safety Code §298E.101.



## MEMORANDUM

**To:** Central Health Board of Managers  
**From:** Katie Coburn  
**CC:** Mike Geeslin, President & CEO  
**Date:** December 16, 2020  
**Re:** Setting the Local Provider Participation Fund (LPPF) mandatory payment rate for FY 2021 – ACTION ITEM

---

### Summary

Central Health staff request the board take action to set the FY 2020 Local Provider Participation Fund (LPPF) mandatory payment rate at 1.66% of net patient revenue of Travis County inpatient hospitals.

### Background

Under Chapter 298E of the Texas Health & Safety Code, the Central Health board is required to set the mandatory payment rate for hospitals that provide inpatient services in Travis County. The fee must be uniform and broad based. Funds generated by the payment must be used to provide intergovernmental transfer (IGT) payments on behalf of nonpublic hospitals to draw down Federal matching funds available in certain Medicaid supplemental payment programs.

The 1.66% payment rate will generate approximately \$58 million dollars. It is intended to provide the IGT funds needed for FY 2021 Uncompensated Care (UC) payments, additional UC funds previously withheld in relation to the Children's Hospital Association of Texas (CHAT) lawsuit, and the Uniform Hospital Rate Increase Program (UHRIP) Program Year 5 Advance Payment.

Central Health staff has evaluated the rate, and we recommend the board adopt the proposed rate of 1.66%. Public input on the rate will be taken at a public hearing of the Board of Managers on December 16, 2020. Notice of the hearing was posted according to Central Health Board of Managers meeting posting procedures, emailed directly to Travis County inpatient hospitals, and was published in the newspaper according to legislative mandated notice requirements.

### Action Requested

Central Health staff request the board take action to set the FY 2021 Local Provider

Participation Fund (LPPF) mandatory payment rate at 1.66% of net patient revenue of Travis County inpatient hospitals.



**CENTRAL  
HEALTH**

---

# Travis County LPPF: FY 21 Proposed Mandatory Payment Rate

---

**DEC. 16, 2020**

Central Health Board of Managers Meeting

---

**PRESENTER**

**Katie Coburn, RHP Director**

# LPPF Mandatory Payment Rate

- **Assessed as a uniform percentage of net patient revenue of Travis County inpatient hospitals**
- **Set by the Board of Managers**
- **Central Health, as LPPF Administrator, collects funds to be held in fiduciary capacity and completes intergovernmental transfers**
- **Use of funds**
  - Limited to legislative purposes
  - Central Health collaborates with hospital representatives on uses of funds
- **FY 20 Rate – 2.38%**





# Proposed Payment Rate for FY 2021

- **Proposed FY 2021 LPPF Payment Rate: 1.66% of net patient revenue**
- **Generates approximately \$58 million in local funds to be used for intergovernmental transfers**
- **Provides the local portion for:**
  - FY 21 Uncompensated Care (UC) Payments
  - Additional UC payments previously withheld due to CHAT lawsuit
  - UHRIP Program Year 5 Advance Payment
- **Staff anticipates amending rate later in the year once additional information is available from HHSC**





CENTRAL HEALTH

**Our Vision**

Central Texas is a model healthy community.

**Our Mission**

By caring for those who need it most, Central Health improves the health of our community.

**Our Values**

Central Health will achieve excellence through:

*Stewardship* - We maintain public trust through fiscal discipline and open and transparent communication.

*Innovation* - We create solutions to improve healthcare access.

*Respect* - We honor our relationship with those we serve and those with whom we work.

*Collaboration* - We partner with others to improve the health of our community.

**BOARD MEETING**

**December 16, 2020**

**AGENDA ITEM C1**

Receive the Quarterly Investment Report and ratify Central Health Investments for November 2020.

**INVESTMENT MANAGEMENT DEPARTMENT**  
**TRAVIS COUNTY, TEXAS**



Travis County Administration Building  
700 Lavaca, Suite 1560  
P.O. Box 1748  
Austin, Texas 78767

Phone: 512) 854-9779  
Fax: (512) 854-4210  
Email: Deborah.laudermilk@traviscountytexas.gov

**DATE:** November 9, 2020

**TO:** Sherri R. Greenberg, M.S., Chairperson  
Charles E. Bell, M.D., M.S., Vice Chairperson  
Julie Oliver, J.D., Treasurer  
Cynthia Valadez, Sr., Secretary  
Shannon Jones III, M.P.A., Manager  
Maram Museitif, MPH, CPH, Manager  
Guadalupe Zamora, M.D., Manager  
Julie Zuniga, R.N., PhD, Manager

**FROM:** Deborah A. Laudermilk, Travis County Chief Investment Officer  
Reagan Grimes, Travis County Investment Manager  
Michael G'Benoba, Sr. Financial Analyst

**RE:** Central Health FY 2020 Fourth Quarter Investment Report

**INVESTMENT EARNINGS**

**Total portfolio earnings for this quarter:** \$ 344,924

**Total portfolio earnings for this fiscal year:** \$ 2,335,703

These earnings are determined on an accrual basis. Investment balances are in the Portfolio Statistics section of this report.

**CASH AVAILABILITY**

**Operating Account for the Quarter Ended September 30, 2020:**

The cash availability in the bank operating account is monitored daily. Typically, cash balances are invested as soon as they are known and available. The cash availability (includes the controlled disbursement) for the quarter ended September 30, 2020:

	<b>2020 Average Daily Collected Balance</b>	<b>2019 Average Daily Collected Balance</b>
<b>July</b>	\$ 1,204,369	\$ 947,050
<b>August</b>	\$ 1,204,368	\$ 1,351,624
<b>September</b>	\$ 1,212,663	\$ 1,341,450

The dedicated non-interest bearing account that was opened at Chase is reflected in the average daily balances. With rates dropping so low this year, the \$1,190,000 will not earn enough ECR (earnings credit) to offset annual bank charges.

## **MARKET REVIEW**

If anyone would have told you in January that interest rates would fall to one of the all-time lows, that the country and most of the world would be in and out of lockdowns to try to stop the spread of a deadly virus, and that the economy would go from one of the all-time best to over a decades' worth of job growth erased in a month and more than 36 million unemployment claims filed in April and May, you would have asked what I had been smoking and/or drinking. And what is even more amazing is that according to some, it's all because of one person.

For all the reasons mentioned in my opening statement, these are very difficult times, but as an economist reminded us in a recent presentation, this is nothing like the 2009 recession and the recovery should be much quicker. Unfortunately, numerous businesses have not and/or will not make it through these tumultuous times, particularly small businesses that make up 51% of all US businesses. We have already seen evidence of economic improvement even though it will most likely slow in the fourth quarter, but then after a 33% increase in Q3 GDP, growth would be expected to slow from this extraordinary pace. The path of GDP in the County's fiscal year has been as follows;

- GDP growth of 2.1% for the quarter ending December 31st
- GDP fell to -5.0% for the quarter ending March 31, 2020, most of the decline happened in the last 2 weeks of March. At that point in time, this was the biggest contraction since 2009.
- For the period ending June 30, 2020, GDP fell 31.4%, the largest decline on record.
- And for the quarter ending September 30, 2020, GDP boomed 33.1%
- GDP estimates for the fourth calendar quarter are estimated to be 3.5% – 4.5% growth.

Personal consumption contributed 25.3% to Q3 GDP, with goods adding 9.2% and services adding 16%. Business fixed investment, residential fixed investment and rising inventories added 11.6%. The ISM manufacturing for October rose to 59.3 signaling a strong start to the fourth quarter. Unlike the recession of 2009, many households and businesses were in reasonable financial positions, going into the pandemic and obviously felt comfortable making purchases and/or investments that would not happen if they were heavily burdened with debt or concerned about their income longer-term. These numbers do not mean that the US economy will continue upward and onward without any missteps but, do provide some glimmer of hope that we have turned the corner. This incredibly volatile year is far from over and neither is the economic volatility resulting from the COVID pandemic and the fluctuation in the number of cases, severity and lockdowns. As we are seeing a resurgence of cases in Europe and threatened new lockdowns, there is great concern that the US could follow down the same path in the near future.

The two key targets that the Fed has reiterated they are using as indicators of the direction and health of the economy, are maximum employment and an inflation rate averaging 2% over the longer-term, i.e. price stability. Currently, inflation has been

impacted by the volatility of the employment numbers and the ability for consumers to spend during COVID-induced lockdowns. As in any extreme/unusual circumstance there can be shortages that impact prices. As we all remember, at the beginning of the pandemic there were shortages of some very odd products that made no sense relative to the circumstances, for example, toilet paper. Consumers adapted and if anything became a lot more open to online purchases and other buying behaviors related to working from home and social distancing. In addition, the housing market has spiked to new levels that we haven't seen since 2007. Many people are fleeing metropolitan areas to work remotely in lower tax, lower crime and suburban areas. Previously, housing growth had been strong in select markets in the US, like the Southwest, but now it is evident in the Northeast and the West as well. Another interesting sales strength has been the sales of light vehicles. The sales numbers are nearly back to the pre-pandemic level and since inventories have been low, dealers have been able to cut rebates and incentive financing, enhancing their bottom-line. CPI for October was flat, mainly due to Medicare healthcare assistance declining, which is quite unusual even during normal times. On a year-on-year basis, headline CPI (includes energy and food) fell from 1.4% to 1.2% and core CPI fell from 1.7% to 1.6%. The only categories that rose were those that had pandemic bottlenecks. It is estimated with the possibility of a vaccine available in 2021, greater consumer confidence with a willingness to spend and hopefully another stimulus package, that CPI could increase to the mid 2% area. It is still unlikely that the Fed would raise rates in 2021 and could take until the end of 2022 before we see any increase in Fed funds rates.

The employment numbers for 2020 have been as volatile as the GDP numbers, but they are improving. We have added over 11 million jobs since April. Many were positively surprised with the recent announcement of the nonfarm payroll numbers for October, an increase of 638,000 and the 15K positive revisions for August and September. The unemployment rate fell from 8.4% in August, to 7.9% in September and then to 6.9% in October which was even below the Fed's year-end median forecast for unemployment. Granted, unemployment still remains about 3 times higher than when times are good. The greatest improvement in October was in the private service-producing industries and the goods-producing industries. We must also take into consideration that some of the improvement could be from 6-months of unemployment benefits running out as well as an end to the pandemic benefits. Average hourly wages were essentially unchanged in September, but rose ever-so slightly, 0.1%, in October, which is most likely a reflection of some of the lower paid workers in the leisure and hospitality industries returning to work. Unfortunately, the numbers also indicated that many were taking part-time jobs because they were unable to find full-time positions or because they could not find child-care. Even though the large number of people working part-time for the listed reasons is disappointing, it is suggesting that we may be heading in the right direction to avoid a K-shaped recovery.

**Fed continues to emphasize the need for fiscal stimulus.** The first half of October, negotiations between Treasury Secretary Mnuchin and the House, occasionally provided glimmers of hope, but as the election neared, all bets were off. It's unfortunate that Congress too often puts their political special interests before the failing small businesses and the states and municipalities that need aid to support their communities. Fed chairman Powell has mentioned this need in every speech he has given, but to no avail. The Fed has done everything they can on the monetary side and are willing to do bigger

repurchases to support the financial markets. It is highly unlikely that rates will change since we are already close to 0% and as I've said in previous reports, nearly all the FOMC members know that negative rates don't work. With the change in the administration there has been some speculation about the constitution of the FOMC. Chairman Powell was appointed by President Obama and has shown through his chairmanship that he is A-political. It should be the hope of most that he remains Chairman to see us through the rest of these turbulent economic times. The political environment could also be a challenge in 2021 as new initiatives are promoted. But with the possibility of Congress remaining divided (House-Democrats and Senate-Republicans) there may continue to be many stalemates.

Now on to the culprit of all the negativity, COVID. It appeared that through the summer months that the US and Europe had a relatively good handle on the pandemic. Unfortunately, with the start-up of schools, colleges (and we all know that college students put their health before socializing and drinking) and easing of lockdown restrictions, cases are rising again. The cases are rapidly increasing, up 44% from the end of October. Record hospitalizations are expected to be reached soon. Many parts of the country are recommending limited holiday gatherings and also new threats of re-imposed lockdowns. As mentioned previously, this virus will continue to impact the country and world economically until it is under control or the vaccine is available and used widely.

On a more positive note, Pfizer announced that it had tremendous success rates on a vaccine that they have been developing with hopes that it could be approved by the end of the month. Granted, it will take some time to get the vaccine into production and distributed. Estimates are that it would be immediately released to first responders and medical professionals, taking 28 days after the vaccinations to be effective and then hopefully in approximately 5 months it could be available and distributed to the public. With the possibility of a successful vaccine, in the near future, the economy in 2021 could continue to recover from the chaos of 2020. In addition, Moderna has also reported that their COVID vaccine has shown positive results and is ready to go to the FDA for approval.

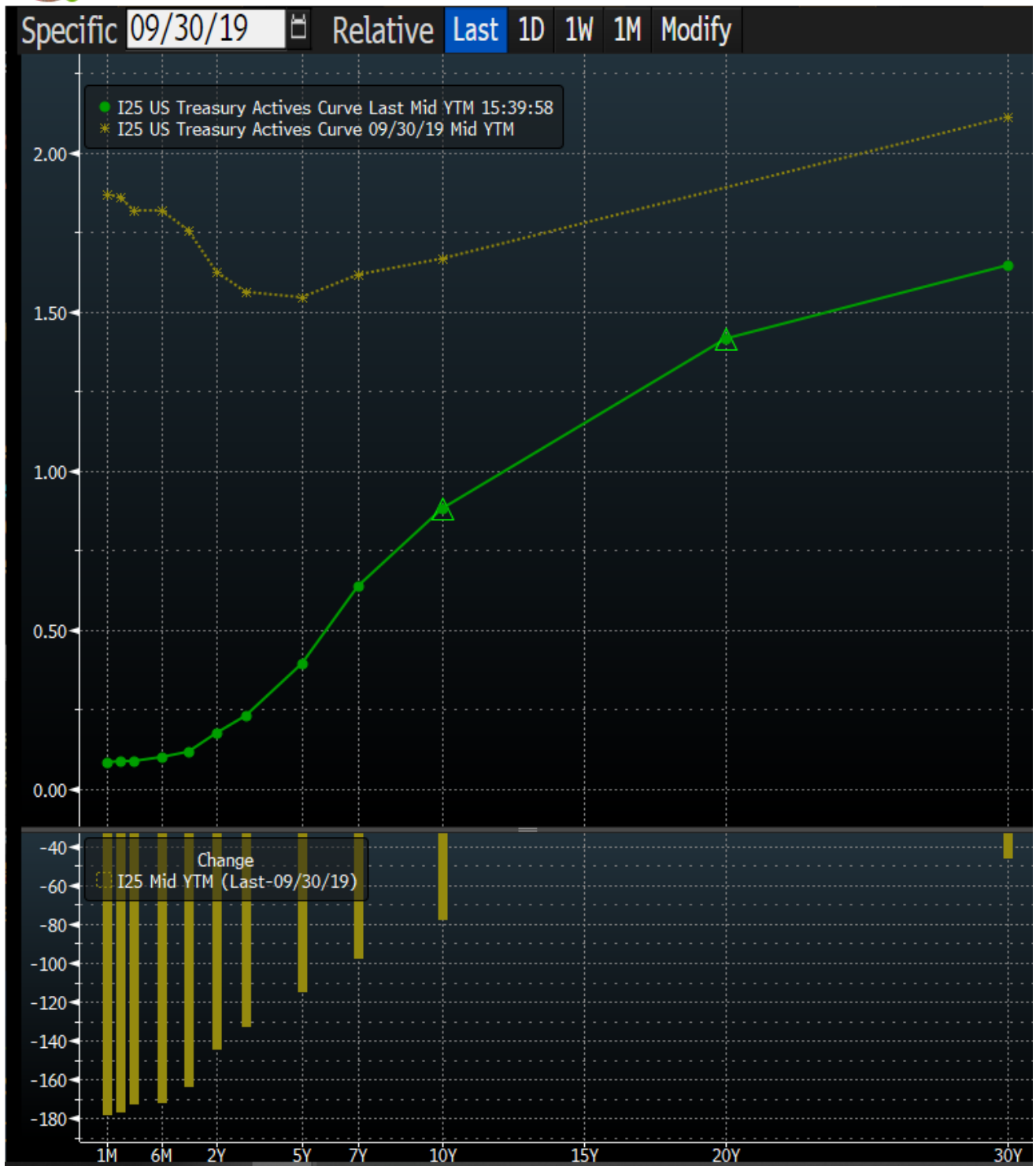
Outside of the U.S., signs of economic improvement are equally as volatile. Eurozone is considering stricter lockdowns and other measures to slow the spread. Third quarter Eurozone GDP rose 12.7%, but on an annualized basis they are still 4.3% behind. Most forecast Q4 GDP to decline 3% and are anticipating a W-shaped recovery. In the UK cases have also accelerated sharply over the past couple of months to the point that at the end of October the government re-introduced another lockdown for 4 more weeks.. Policymakers there have responded with additional monetary and fiscal measures. Most estimates see the UK GDP contracting 11.5% in 2020 and only grow 2.5% in 2021. Asian countries, and in particular China, seem, to be the only country that has managed to get a handle on containing the virus and rebuilding their economy. Their economy could grow 2% for all of 2020. Japan is also healthier than the West and their economy is only expected to contract 4% in 2020.

In the midst of all of the COVID-related issues, the UK is still moving forward with BREXIT event though there still isn't a trade deal with the deadline looming of December 31<sup>st</sup>. On January 31, 2020, the United Kingdom left the EU with a withdrawal agreement.

The 11-month transition period is about to be over and the UK will no longer be a part of the EU trade deals. This lack of an agreement could cause serious disruptions in the UK economy in addition to the aforementioned problems. For all of us, regardless of our borders or politics, the outcome of 2020 and 2021 is heavily dependent on a successful COVID vaccine.

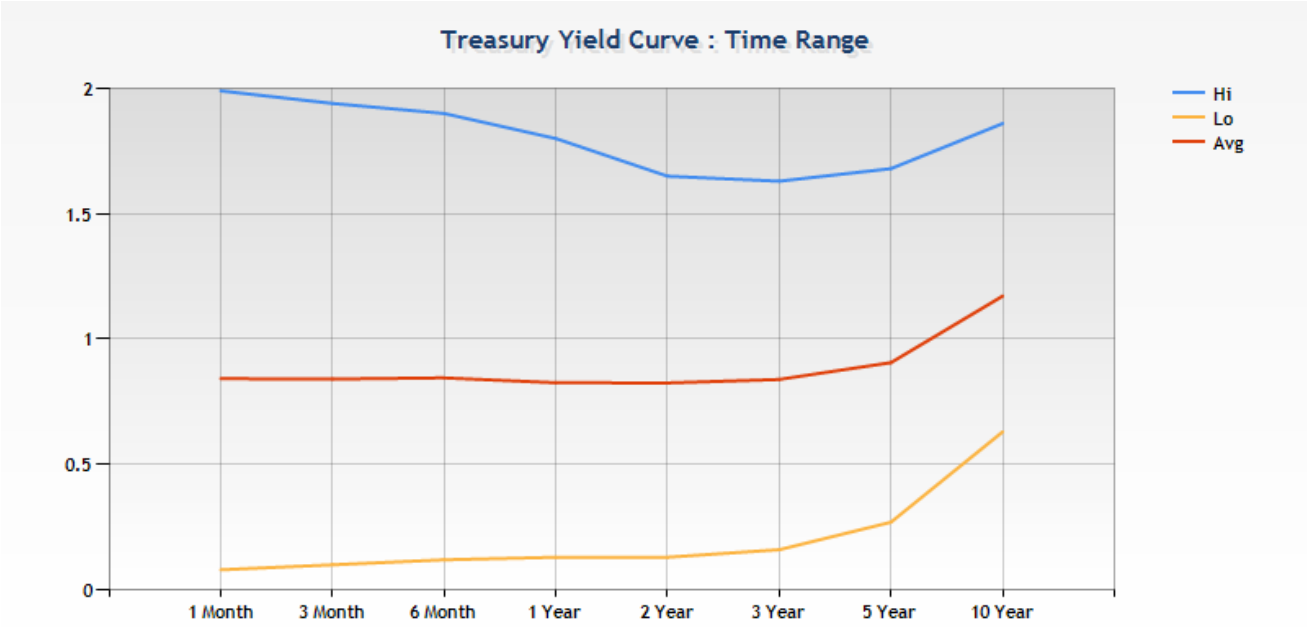
The monthly average of the Fed funds effective rate since the beginning of the fiscal year has traded between 1.90% and 0.09%. For the quarter the effective rate has held steady at the 0.09% rate. The yield of the 2-year treasury was trading in the high 1.60's throughout most of the first quarter of our fiscal year and then the rate cuts began. By the beginning of April, 2020 the 2-year was in the mid 0.20% area and by year-end it is hovering around 0.13%. Unfortunately, rates are expected to remain at this same level, most likely through 2021 and possibly 2022. As you will see in the monthly earnings reports for FY2021, the earnings are off dramatically. We have gone from contributing close to a record amount to an abysmally low yield/earnings. We will continue to make the best decisions for the County investments as the current market allows.

Below is the Bloomberg chart of the changes in the yield curve over the past fiscal year. This chart has been included to provide you with a visual of the difficult investment environment over the past year.



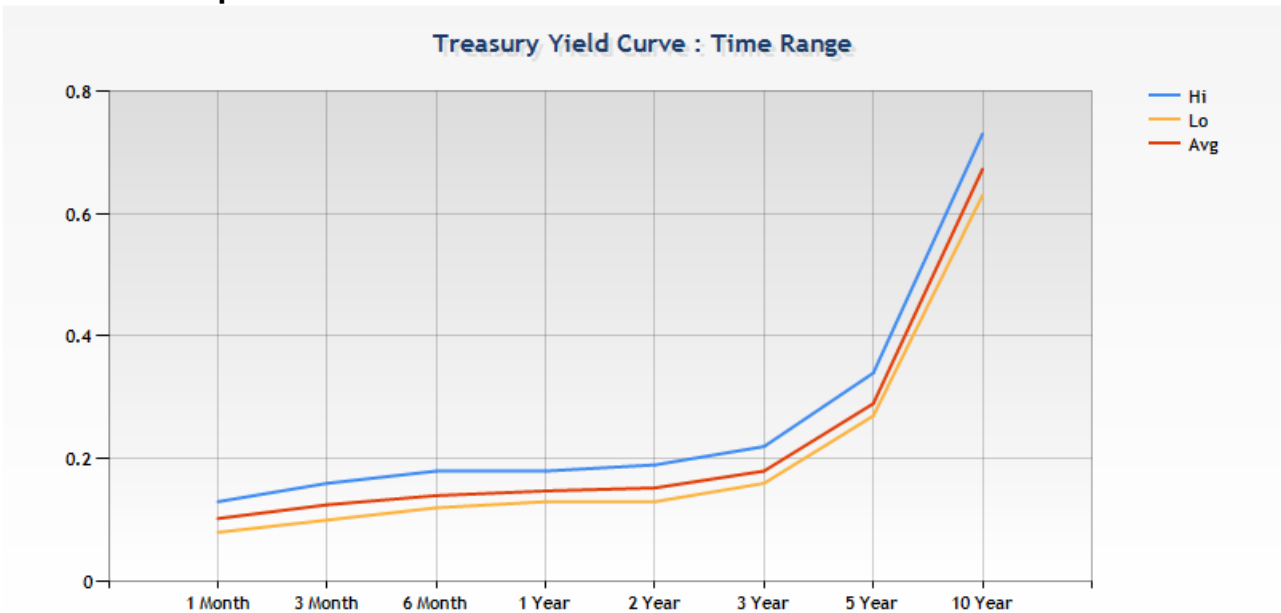


September 2019 – September 2020



Data	1 Month	3 Month	6 Month	1 Year	2 Year	3 Year	5 Year	10 Year
Hi	1.99	1.94	1.9	1.8	1.65	1.63	1.68	1.86
Lo	0.08	0.1	0.12	0.13	0.13	0.16	0.27	0.63
Avg	0.84	0.84	0.85	0.83	0.83	0.84	0.91	1.17

## June 2020 – September 2020



Data	1 Month	3 Month	6 Month	1 Year	2 Year	3 Year	5 Year	10 Year
Hi	0.13	0.16	0.18	0.18	0.19	0.22	0.34	0.73
Lo	0.08	0.10	0.12	0.13	0.13	0.16	0.27	0.63
Avg	0.10	0.13	0.14	0.15	0.15	0.18	0.29	0.67

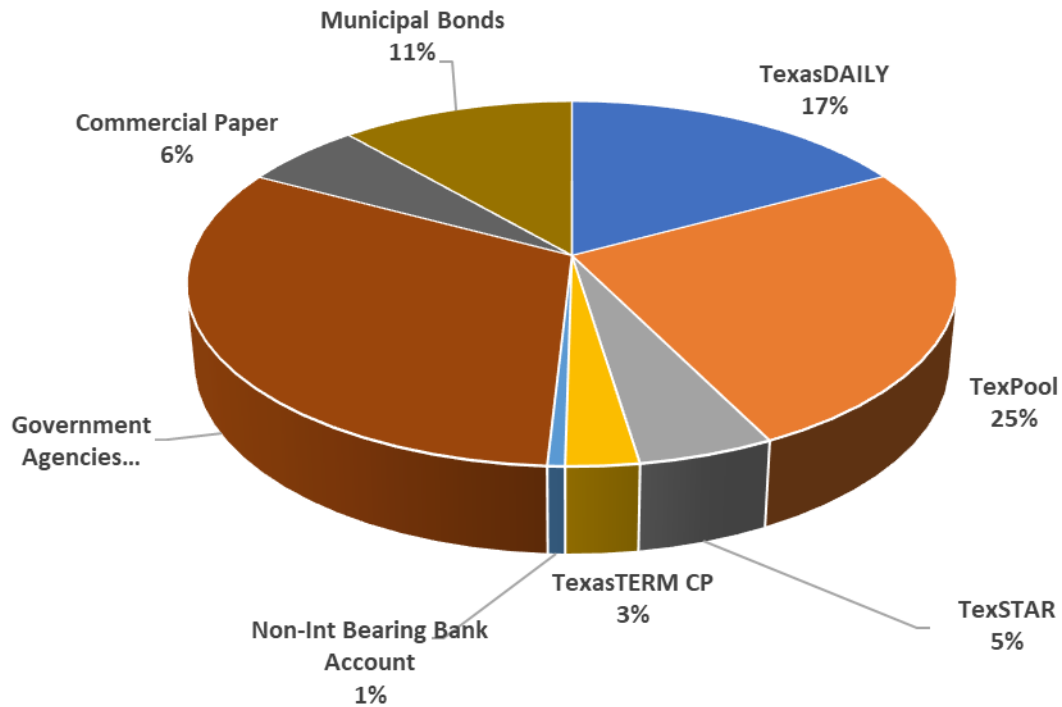
Date	1 Month	3 Month	6 Month	1 Year	2 Year	3 Year	5 Year	10 Year
Jun 2020	0.13	0.16	0.18	0.18	0.19	0.22	0.34	0.73
Jul 2020	0.11	0.13	0.14	0.15	0.15	0.18	0.28	0.63
Aug 2020	0.08	0.10	0.12	0.13	0.14	0.16	0.27	0.65
Sep 2020	0.09	0.11	0.12	0.13	0.13	0.16	0.27	0.68

## **INVESTMENT STRATEGY - NEXT QUARTER**

### Operating Portfolio

We have purchased two agencies and 5 municipal bonds since the beginning of the first quarter to attempt to lock in the best yield as rates continue to go down. We will continue to do our best to lock in the best yield while taking into consideration the liquidity needs of Central Health. As tax revenue starts to flow into the Operating fund, we will continue to invest to maximize the return, while keeping our first priority liquidity and to ensure the security of the principal of the Central Health investments. The next 3 charts are of the yield curve showing the changes in the investment environment over the past year, fourth quarter and currently.

## Portfolio Diversity September 30, 2020



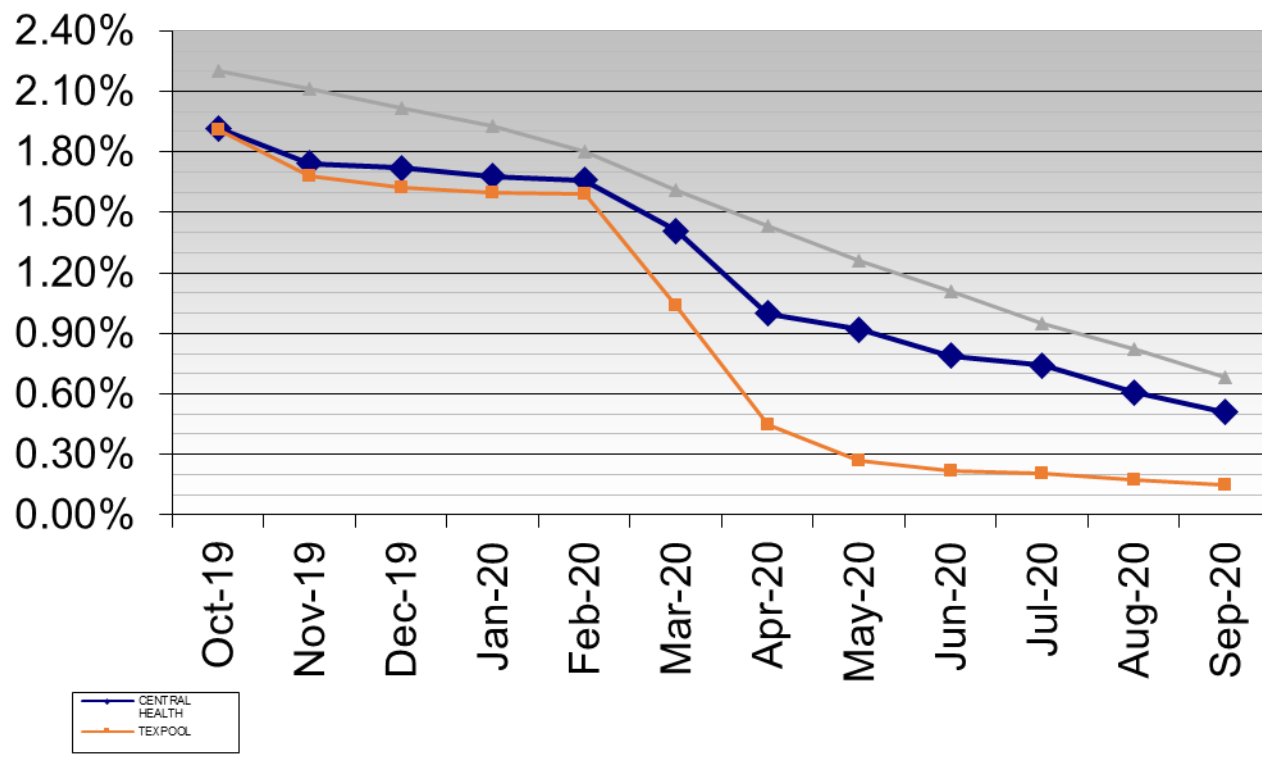
### PORTFOLIO DIVERSITY

Safety of principal is the first priority of any public investing portfolio. An important way to maintain safety is to diversify by purchasing a variety of security types. Total investment in the overnight pools is at 48%. The percent of Agencies in the portfolio is currently at 32%. During the quarter, there were seven maturities. There were two muni bonds, 3 agency bonds and one piece of Texas Term purchased. These transactions resulted in an increase in the percentage invested in the overnight pools from 54% at the end of June to 48% at the end of September.

	<u>Actual Percent</u>	<u>Policy Limit</u>
Government Agencies	31.95%	75%
TexasDAILY	17.10%	30%
TexPool	25.52%	50%
TexSTAR	4.96%	30%
Texas TERM CP	2.66%	30%
Treasury Securities	0.00%	100%
Non-Int Bearing Bank Acct	0.63%	--
Certificates of Deposits	0.00%	50%
Municipal Bonds	11.37%	20%
Commercial Paper	5.80%	20%
	<u>100.00%</u>	

Portfolio percentage limits are tested at least monthly and reported to the Board of Managers. All investments during this quarter were within the Policy Limits.

## Portfolio Performance September 30, 2020



### PERFORMANCE ANALYSIS

	<u>July</u>	<u>August</u>	<u>September</u>
Healthcare District	0.74%	0.61%	0.51%
TexPool	0.21%	0.18%	0.15%
Rolling 1-Yr Treasury	0.95%	0.82%	0.68%

The Federal Funds rate is currently in the range between 0.00% and 0.25%. The underperformance of the investments versus the benchmark was due to the inability to invest funds longer-term because of the uncertainty of short-term liquidity needs. The weighted average maturity (WAM) of the Central Health portfolio increased from 196 days at the end of the third quarter on June 30, 2020, to 460 days at the end of the fourth quarter on September 30, 2020.

### COLLATERAL ADEQUACY

Collateral coverage was more than the 105% of bank balances required by policy on every day during the fourth quarter except for July 2, 2020 when it was 76.75%. The following

business day, collateral was added and the coverage was above the required 105%. Based on policy requirements, the highest collateral coverage during the fourth quarter was 214.77% on August 11, 2020, and the lowest was 76.75% on July 2, 2020.

Collateral coverage was more than 105% of bank balances required by policy on all days during the fiscal year, except February 9, 2020 and July 2, 2020. In both cases, collateral was added on the following business day and the coverage was above the required 105%. The highest collateral coverage for FY 2020 was 299.49% on February 3, 2020.

This report was prepared jointly by Deborah Laudermilk, Travis County Chief Investment Officer, Reagan Grimes, Travis County Investment Manager, and Michael G'Benoba, Sr. Financial Analyst. The investment portfolio of Central Health complies with the investment strategies in the Central Health Investment and Collateral Policy and Procedures and with the Public Funds Investment Act of Texas.

*Deborah A. Laudermilk*  
Deborah A. Laudermilk  
Chief Investment Officer

*Reagan Grimes*  
Reagan Grimes  
Investment Manager

*Michael G'Benoba*  
Michael G'Benoba  
Financial Analyst

CENTRAL HEALTH QUARTERLY INVESTMENT REPORT  
 PORTFOLIO STATISTICS  
 DATE: September 30, 2020

<u>By Security Type</u>			<u>WAM in Days</u>	<u>Sept Yield to Maturity</u>
<u>Operating-</u>				
TexasDAILY	\$ 32,105,845.57	17.10%	1	0.14%
TexPool	47,919,968.73	25.52%	1	0.15%
TexSTAR	9,316,295.77	4.96%	1	0.14%
Texas TERM CP	5,000,000.00	2.66%	72	0.30%
Non-Int Bearing Bank Account	1,190,000.00	0.63%		
Certificates of Deposit	-	0.00%		
Treasury Securities	-	0.00%		
Government Agencies	59,995,000.00	31.95%	1275	0.78%
Commercial Paper	10,894,350.17	5.80%	11	1.46%
Municipal Bonds	21,354,969.20	11.37%	544	0.85%
Total	<u>\$ 187,776,429.44</u>	<u>100.00%</u>	<u>475</u>	<u>0.51%</u>
<u>LPPF</u>				
TexPool	\$ 6,224,267.86	100.00%	1	0.15%
	<u>\$ 6,224,267.86</u>	<u>100.00%</u>	<u>1</u>	<u>0.15%</u>
Total	<u>\$ 194,000,697.30</u>	<u>100.00%</u>		

<u>Compared to Policy Limits</u>	<u>Actual %</u>	<u>Guidelines</u>	
TexasDAILY	\$ 32,105,845.57	16.65%	30.00%
TexPool	54,144,236.59	28.08%	50.00%
TexSTAR	9,316,295.77	4.83%	30.00%
Texas TERM CP	5,000,000.00	2.59%	30.00%
Total LGIPS	<u>\$ 100,566,377.93</u>	<u>52.16%</u>	<u>70.00%</u>
Certificates of Deposit	0.00	0.00%	50.00%
Treasury Securities	0.00	0.00%	100.00%
Government Agencies	59,995,000.00	31.12%	75.00%
Commercial Paper	10,894,350.17	5.65%	20.00%
Municipal Bonds	21,354,969.20	11.08%	20.00%
	<u>\$ 192,810,697.30</u>	<u>100.00%</u>	

Commercial Papter by Entity as a Percentage of Portfolio

Credit Suisse	\$5,920,600.17	3.05%	5.00%
ING CP	\$4,973,750.00	2.56%	5.00%
	<u>\$10,894,350.17</u>	<u>5.62%</u>	<u>20.00%</u>

Municipal Bonds by Entity as a Percentage of Portfolio

Chippewa Valley School Go Bonds	\$ 2,022,800.00	1.04%	5.00%
Florida St Board Admin Fin Corp Rev	\$ 5,871,068.00	3.03%	5.00%
San Bernardino COPS	\$ 2,027,420.00	1.05%	5.00%
Harris County TX Transit	\$ 1,090,843.20	0.56%	5.00%
Oklahoma County OK ISD	\$ 4,662,698.00	2.40%	5.00%
City of Dallas Waterworks	\$ 5,154,300.00	2.66%	5.00%
Texas Tech Univ	\$ 525,840.00	0.27%	5.00%
	<u>\$ 21,354,969.20</u>	<u>11.01%</u>	<u>20.00%</u>

Investment Revenue & Accrued Interest	4th Quarter 2020	FY 2020
TexasDAILY	\$ 21,062.38	\$ 470,034.03
TexPool	22,170.29	485,225.49
TexSTAR	2,915.57	84,064.85
Texas TERM CP	0.00	-
Certificates of Deposit	0.00	-
Treasury Securities	68,750.00	137,500.00
Government Agencies	0.00	345,826.25
Commercial Paper	41,338.80	41,338.80
Municipal Bonds	396,327.36	586,003.86
	<u>\$ 552,564.40</u>	<u>\$ 2,149,993.28</u>
Discount Accretion & Accrued Interest		
TexasTERM CP	\$ 3,369.86	\$ 42,386.25
-less previous accruals	(39,016.39)	(39,016.39)
Certificates of Deposit		-
-less previous accruals		-
Treasury Securities	14,736.95	125,899.95
-less previous accruals	(57,167.12)	(172,002.29)
Government Agencies	139,625.79	839,116.41
-less previous accruals	0.00	(489,627.62)
Commercial Paper	63,242.00	247,427.23
-less previous accruals	0.00	-
Municipal Bonds	134,131.15	583,918.75
-less previous accruals	(466,562.95)	(952,392.20)
	<u>\$ (207,640.71)</u>	<u>\$ 185,710.09</u>
Total Investment Revenue & Accrued Interest	<u>\$ 344,923.69</u>	<u>\$ 2,335,703.37</u>

Portfolio Yield and WAM	Yield	Weighted Average Maturity
July 2020	0.71%	205 days
Aug 2020	0.60%	338 days
Sept 2020	0.50%	460 days

**SUMMARY OF MARKET VALUES FOR THE QUARTER ENDED 09/30/20**

(Excludes funds in TexPool, TexasDAILY, and TexSTAR because the difference between book value and market value of Central Health shares is immaterial)

**Operating Portfolio**

	<u>Cost Value</u>	<u>Market Value</u>	<u>Unrealized Gain/(Loss)</u>	<u>Accrued Interest</u>
6/30/2020	\$ 107,293,810.05	\$ 107,822,219.93	\$ 528,409.88	\$ 506,408.42
Changes	\$ (10,049,490.68)	\$ (10,332,264.33)	\$ (282,773.65)	\$ (208,653.04)
9/30/2020	<u>\$ 97,244,319.37</u>	<u>\$ 97,489,955.60</u>	<u>\$ 245,636.23</u>	<u>\$ 297,755.38</u>

The primary source of market values was JP Morgan Chase safekeeping.  
This pricing was uploaded into our Tracker Investment Software.



**SUMMARY OF MARKET VALUES FOR THE YEAR ENDED 09/30/2020**

(Excludes funds in TexPool and TexasDAILY, and TexSTAR because the difference between book value and market value of Central Health shares is immaterial)

**Operating Portfolio**

	<u>Cost Value</u>	<u>Market Value</u>	<u>Unrealized Gain/(Loss)</u>	<u>Accrued Interest</u>
9/30/2019	\$ 41,297,635.54	\$ 41,345,511.05	\$ 47,875.51	\$ 130,836.79
Changes	\$ 55,946,683.83	\$ 56,144,444.55	\$ 197,760.72	\$ 166,918.59
9/30/2020	<u>\$ 97,244,319.37</u>	<u>\$ 97,489,955.60</u>	<u>\$ 245,636.23</u>	<u>\$ 297,755.38</u>

The primary source of market values was JP Morgan Chase safekeeping.  
This pricing was uploaded into our Tracker Investment Software.

**Central Health****Q4 - FY 2020 - Matured, Sold and Called Investments****7/01/2020 - 9/30/2020**

<b>Portfolio Name</b>	<b>Description</b>	<b>CUSIP/Ticker</b>	<b>Face Amount/Shares</b>	<b>Principal</b>	<b>Settlement Date</b>	<b>Maturity Date</b>	<b>Coupon Rate</b>
<b>Matured</b>							
Healthcare Operating	ING CP (Disco) 0 7/9/2020	4497W0G93	7,000,000.00	7,000,000.00	07/09/2020	07/09/2020	0.000
Healthcare Operating	Texas TERM 1.7 7/10/2020	TERMCP071020	5,000,000.00	5,000,000.00	07/10/2020	07/10/2020	1.700
Healthcare Operating	FHLB 0 7/15/2020	313384ZK8	7,000,000.00	7,000,000.00	07/15/2020	07/15/2020	0.000
Healthcare Operating	Texas State Trans 4 8/27/2020	882724PY7	8,000,000.00	8,000,000.00	08/27/2020	08/27/2020	4.000
Healthcare Operating	T-Note 1.375 8/31/2020	912828L32	10,000,000.00	10,000,000.00	08/31/2020	08/31/2020	1.375
Healthcare Operating	Toyota Motor Credit 0 9/2/2020	89233GJ23	6,000,000.00	6,000,000.00	09/02/2020	09/02/2020	0.000
Healthcare Operating	FHLB 0 9/14/2020	313384F87	12,101,000.00	12,101,000.00	09/14/2020	09/14/2020	0.000
<b>Sub Total / Average</b>	<b>Matured</b>		<b>55,101,000.00</b>	<b>55,101,000.00</b>			<b>1.011</b>

**Central Health**  
**Q4 - FY 2020 - Quarterly Report - Purchases**  
**7/01/2020 - 9/30/2020**

Description	CUSIP/Ticker	Broker/Dealer	Coupon Rate	Face Amount/Shares	Principal	Interest/ Dividends	Settlement Date	Maturity Date	YTM @ Cost
<b>Healthcare Operating</b>									
TexasTERM 0.3 12/11/2020	TERMCP121120	TexasTERM	0.300	5,000,000.00	5,000,000.00	0.00	07/10/2020	12/11/2020	0.300
Oklahoma County, OK 1 9/1/2022	678720KL6	Stifel	1.000	4,600,000.00	4,662,698.00	2,044.44	09/17/2020	09/01/2022	0.300
City of Dallas Waterworks Rev 1.868 10/1/2022	23542JBH7	Wells Fargo	1.868	5,000,000.00	5,154,300.00	44,883.89	09/24/2020	10/01/2022	0.333
FHLMC 0.5 8/12/2024-21	3134GWKB1	Stifel	0.500	10,000,000.00	10,000,000.00	0.00	08/12/2020	08/12/2024	0.500
FNMA 0.41 8/12/2024-22	3136G4H22	RBC Wealth Management	0.410	10,000,000.00	9,995,000.00	0.00	08/12/2020	08/12/2024	0.423
FHLMC 0.44 9/24/2024-21	3134GWSR8	Daiwa	0.440	10,000,000.00	10,000,000.00	0.00	09/24/2020	09/24/2024	0.440
<b>Total Purchases - Central Health</b>				<b>44,600,000.00</b>	<b>44,811,998.00</b>	<b>46,928.33</b>			<b>0.399</b>

Central Health  
 Beg- End Balance Quarterly Report - Q4 - FY 2020  
 6/30/2020 - 9/30/2020

Description	CUSIP/Ticker	Beginning Face Amount/Shares	Coupon Rate	Beginning Cost Value	Maturity Date	Ending YTM @ Cost	Ending Cost Value	Total Buys	Total Sells	Ending MV	Ending Market Accrued Interest	Unrealized Gain/Loss-CV
<b>Healthcare Operating</b>												
ING CP (Disco) 0 7/9/2020	4497W0G93	7,000,000.00	0.000	6,935,250.00	07/09/2020		0.00	0.00	7,000,000.00	0.00	0.00	0.00
Texas TERM 1.7 7/10/2020	TERMCP071020	5,000,000.00	1.700	5,000,000.00	07/10/2020		0.00	0.00	5,000,000.00	0.00	0.00	0.00
FHLB 0 7/15/2020	313384ZK8	7,000,000.00	0.000	6,949,808.06	07/15/2020		0.00	0.00	7,000,000.00	0.00	0.00	0.00
Texas State Trans 4 8/27/2020	882724PY7	8,000,000.00	4.000	8,068,560.00	08/27/2020		0.00	0.00	8,000,000.00	0.00	0.00	0.00
T-Note 1.375 8/31/2020	912828L32	10,000,000.00	1.375	9,989,062.50	08/31/2020		0.00	0.00	10,000,000.00	0.00	0.00	0.00
Toyota Motor Credit 0 9/2/2020	89233GJ23	6,000,000.00	0.000	5,919,480.00	09/02/2020		0.00	0.00	6,000,000.00	0.00	0.00	0.00
FHLB 0 9/14/2020	313384F87	12,101,000.00	0.000	11,999,328.12	09/14/2020		0.00	0.00	12,101,000.00	0.00	0.00	0.00
Credit Suisse New York 0 10/9/2020	2254EAK93	6,000,000.00	0.000	5,920,600.17	10/09/2020	1.795	5,920,600.17	0.00	0.00	5,999,880.00	0.00	79,279.83
ING CP 0 10/13/2020	45685QKD0	5,000,000.00	0.000	4,973,750.00	10/13/2020	1.056	4,973,750.00	0.00	0.00	4,999,900.00	0.00	26,150.00
TexasTERM 0.3 12/11/2020	TERMCP121120	0.00	0.300	0.00	12/11/2020	0.300	5,000,000.00	5,000,000.00	0.00	5,000,000.00	3,369.86	0.00
Florida St Board Admin Fin Corp Rev 2.638 7/1/2021	341271AB0	5,760,000.00	2.638	5,871,068.00	07/01/2021	1.000	5,871,068.00	0.00	0.00	5,861,145.60	37,565.12	-9,922.40
San Bernardino Cty COPS 2.03 10/1/2021	796815ZF8	2,000,000.00	2.030	2,027,420.00	10/01/2021	1.000	2,027,420.00	0.00	0.00	2,030,320.00	20,187.22	2,900.00
Harris County TX Transit 1.659 11/1/2021	41422EJX2	1,080,000.00	1.659	1,090,843.20	11/01/2021	0.951	1,090,843.20	0.00	0.00	1,093,068.00	7,415.73	2,224.80
CHIPPEWA VALLEY SCHOOLS GO 2.98 5/1/2022	170016YZ6	2,000,000.00	2.980	2,022,800.00	05/01/2022	2.603	2,022,800.00	0.00	0.00	2,085,220.00	24,667.78	62,420.00
Oklahoma County, OK 1 9/1/2022	678720KL6	0.00	1.000	0.00	09/01/2022	0.300	4,662,698.00	4,664,742.44	0.00	4,664,952.00	3,705.56	2,254.00
City of Dallas Waterworks Rev 1.868 10/1/2022	23542JBH7	0.00	1.868	0.00	10/01/2022	0.333	5,154,300.00	5,199,183.89	0.00	5,145,750.00	46,440.56	-8,550.00
FHLMC 0.75 10/27/2023-20	3134GVMT2	10,000,000.00	0.750	10,000,000.00	10/27/2023	0.750	10,000,000.00	0.00	0.00	10,004,300.00	31,875.00	4,300.00
FFCB 1.93 10/30/2023-20	3133EK4A1	10,000,000.00	1.930	10,000,000.00	10/30/2023	1.930	10,000,000.00	0.00	0.00	10,014,600.00	80,416.67	14,600.00
FHLMC 0.625 10/30/2023-21	3134GVPE2	10,000,000.00	0.625	10,000,000.00	10/30/2023	0.625	10,000,000.00	0.00	0.00	10,023,650.00	26,041.67	23,650.00
Texas Tech Unversity 2.939 2/15/2024	882806FP2	500,000.00	2.939	525,840.00	02/15/2024	1.524	525,840.00	0.00	0.00	538,010.00	1,836.88	12,170.00
FHLMC 0.5 8/12/2024-21	3134GWKB1	0.00	0.500	0.00	08/12/2024	0.500	10,000,000.00	10,000,000.00	0.00	10,010,930.00	6,666.67	10,930.00
FNMA 0.41 8/12/2024-22	3136G4H22	0.00	0.410	0.00	08/12/2024	0.423	9,995,000.00	9,995,000.00	0.00	10,016,440.00	6,833.33	21,440.00
FHLMC 0.44 9/24/2024-21	3134GWSR8	0.00	0.440	0.00	09/24/2024	0.440	10,000,000.00	10,000,000.00	0.00	10,001,790.00	733.33	1,790.00
<b>Healthcare Operating</b>		<b>107,441,000.00</b>		<b>107,293,810.05</b>		<b>0.845</b>	<b>97,244,319.37</b>	<b>44,858,926.33</b>	<b>55,101,000.00</b>	<b>97,489,955.60</b>	<b>297,755.38</b>	<b>245,636.23</b>

**Central Health**  
**FY 2020 - Matured, Sold and Called Investments**  
**10/01/2019 - 9/30/2020**

Portfolio Name	Description	CUSIP/Ticker	Face Amount/Shares	Principal	Settlement Date	Maturity Date	Coupon Rate
<b>Called</b>							
Healthcare Operating	FFCB 1.67 2/6/2020-18	3133EG5R2	9,000,000.00	9,000,000.00	12/02/2019	02/06/2020	1.670
Healthcare Operating	FHLB 2.05 2/26/2021-19	3130AGZE8	12,000,000.00	12,000,000.00	11/26/2019	02/26/2021	2.050
Healthcare Operating	FFCB 1.74 6/13/2022-20	3133ELDV3	6,250,000.00	6,250,000.00	04/22/2020	06/13/2022	1.740
Healthcare Operating	FFCB 1.9 9/6/2023-20	3133ELFF6	14,595,000.00	14,595,000.00	04/15/2020	09/06/2023	1.900
Healthcare Operating	FHLB 1.7 10/17/2023-19	3130A9QZ7	10,000,000.00	10,000,000.00	04/17/2020	10/17/2023	1.700
Healthcare Operating	FHLMC 1.9 12/18/2023-20	3134GUXE5	10,000,000.00	10,000,000.00	06/18/2020	12/18/2023	1.900
<b>Sub Total / Average</b>	<b>Called</b>		<b>61,845,000.00</b>	<b>61,845,000.00</b>			<b>1.827</b>
<b>Matured</b>							
Healthcare Operating	Toyota 0 10/2/2019	89233HX25	5,000,000.00	5,000,000.00	10/02/2019	10/02/2019	0.000
Healthcare Operating	NYC GO Bonds 2 12/1/2019	64966MGF0	4,000,000.00	4,000,000.00	12/01/2019	12/01/2019	2.000
Healthcare Operating	Georgia Power Muni Rev Bond 3.78 1/1/2020	373541X48	1,285,000.00	1,285,000.00	01/01/2020	01/01/2020	3.780
Healthcare Operating	Texas A&M Univ Rev Bonds 2.193 5/15/2020	88213ABR5	3,000,000.00	3,000,000.00	05/15/2020	05/15/2020	2.193
Healthcare Operating	ING CP (Disco) 0 7/9/2020	4497W0G93	7,000,000.00	7,000,000.00	07/09/2020	07/09/2020	0.000
Healthcare Operating	Texas TERM 1.7 7/10/2020	TERMCPO71020	5,000,000.00	5,000,000.00	07/10/2020	07/10/2020	1.700
Healthcare Operating	FHLB 0 7/15/2020	313384ZK8	7,000,000.00	7,000,000.00	07/15/2020	07/15/2020	0.000
Healthcare Operating	Texas State Trans 4 8/27/2020	882724PY7	8,000,000.00	8,000,000.00	08/27/2020	08/27/2020	4.000
Healthcare Operating	T-Note 1.375 8/31/2020	912828L32	10,000,000.00	10,000,000.00	08/31/2020	08/31/2020	1.375
Healthcare Operating	Toyota Motor Credit 0 9/2/2020	89233GJ23	6,000,000.00	6,000,000.00	09/02/2020	09/02/2020	0.000
Healthcare Operating	FHLB 0 9/14/2020	313384F87	12,101,000.00	12,101,000.00	09/14/2020	09/14/2020	0.000
<b>Sub Total / Average</b>	<b>Matured</b>		<b>68,386,000.00</b>	<b>68,386,000.00</b>			<b>1.368</b>

**Central Health**  
**FY 2020 - Quarterly Report - Purchases**  
**10/01/2019 - 9/30/2020**

Description	CUSIP/Ticker	Broker/Dealer	Coupon Rate	Face Amount/Shares	Principal	Interest/ Dividends	Settlement Date	Maturity Date	YTM @ Cost
<b>Healthcare Operating</b>									
ING CP (Disco) 0 7/9/2020	4497W0G93	Wells Fargo	0.000	7,000,000.00	6,935,250.00	0.00	01/06/2020	07/09/2020	1.817
Texas TERM 1.7 7/10/2020	TERMCP071020	TexasTERM	1.700	5,000,000.00	5,000,000.00	0.00	01/14/2020	07/10/2020	1.700
FHLB 0 7/15/2020	313384ZK8	Hilltop Securities	0.000	7,000,000.00	6,949,808.06	0.00	01/31/2020	07/15/2020	1.566
Texas State Trans 4 8/27/2020	882724PY7	Bancroft	4.000	8,000,000.00	8,068,560.00	172,240.44	03/19/2020	08/27/2020	1.997
T-Note 1.375 8/31/2020	912828L32	SunTrust Capital Markets	1.375	10,000,000.00	9,989,062.50	57,039.84	01/29/2020	08/31/2020	1.563
Toyota Motor Credit 0 9/2/2020	89233GJ23	Toyota Credit Corporation	0.000	6,000,000.00	5,919,480.00	0.00	12/13/2019	09/02/2020	1.855
FHLB 0 9/14/2020	313384F87	MultiBank	0.000	12,101,000.00	11,999,328.12	0.00	02/24/2020	09/14/2020	1.534
Credit Suisse New York 0 10/9/2020	2254EAK93	FHN Financial	0.000	6,000,000.00	5,920,600.17	0.00	01/14/2020	10/09/2020	1.795
ING CP 0 10/13/2020	45685QKD0	Wells Fargo	0.000	5,000,000.00	4,973,750.00	0.00	04/16/2020	10/13/2020	1.056
TexasTERM 0.3 12/11/2020	TERMCP121120	TexasTERM	0.300	5,000,000.00	5,000,000.00	0.00	07/10/2020	12/11/2020	0.300
Florida St Board Admin Fin Corp Rev 2.638 7/1/2021	341271AB0	Wells Fargo	2.638	2,000,000.00	2,038,500.00	16,560.78	04/24/2020	07/01/2021	1.001
Florida St Board Admin Fin Corp Rev 2.638 7/1/2021	341271AB0	Wells Fargo	2.638	3,760,000.00	3,832,568.00	30,858.74	04/23/2020	07/01/2021	1.000
San Bernardino Cty COPS 2.03 10/1/2021	796815ZF8	Wells Fargo	2.030	2,000,000.00	2,027,420.00	6,315.56	05/27/2020	10/01/2021	1.000
Harris County TX Transit 1.659 11/1/2021	41422EJX2	Wells Fargo	1.659	1,080,000.00	1,090,843.20	1,244.25	05/26/2020	11/01/2021	0.951
FFCB 1.74 6/13/2022-20	3133ELDV3	Daiwa	1.740	6,250,000.00	6,246,875.00	0.00	12/13/2019	06/13/2022	1.761
Oklahoma County, OK 1 9/1/2022	678720KL6	Stifel	1.000	4,600,000.00	4,662,698.00	2,044.44	09/17/2020	09/01/2022	0.300
City of Dallas Waterworks Rev 1.868 10/1/2022	23542JBH7	Wells Fargo	1.868	5,000,000.00	5,154,300.00	44,883.89	09/24/2020	10/01/2022	0.333
FFCB 1.9 9/6/2023-20	3133ELFF6	Daiwa	1.900	14,595,000.00	14,595,000.00	3,851.46	12/31/2019	09/06/2023	1.900
FHLB 1.7 10/17/2023-19	3130A9QZ7	Stifel	1.700	10,000,000.00	10,006,500.00	65,638.89	03/06/2020	10/17/2023	1.681
FHLMC 0.75 10/27/2023-20	3134GVMT2	Banc of America	0.750	10,000,000.00	10,000,000.00	0.00	04/27/2020	10/27/2023	0.750
FHLMC 0.625 10/30/2023-21	3134GVPE2	RBC	0.625	10,000,000.00	10,000,000.00	0.00	04/30/2020	10/30/2023	0.625
FFCB 1.93 10/30/2023-20	3133EK4A1	SunTrust Capital Markets	1.930	10,000,000.00	10,000,000.00	0.00	10/30/2019	10/30/2023	1.930
FHLMC 1.9 12/18/2023-20	3134GUXE5	Vining Sparks	1.900	10,000,000.00	10,000,000.00	0.00	12/18/2019	12/18/2023	1.900
Texas Tech Unversity 2.939 2/15/2024	882806FP2	Wells Fargo	2.939	500,000.00	525,840.00	3,347.19	05/07/2020	02/15/2024	1.524
FHLMC 0.5 8/12/2024-21	3134GWKB1	Stifel	0.500	10,000,000.00	10,000,000.00	0.00	08/12/2020	08/12/2024	0.500
FNMA 0.41 8/12/2024-22	3136G4H22	RBC Wealth Management	0.410	10,000,000.00	9,995,000.00	0.00	08/12/2020	08/12/2024	0.423
FHLMC 0.44 9/24/2024-21	3134GWSR8	Daiwa	0.440	10,000,000.00	10,000,000.00	0.00	09/24/2020	09/24/2024	0.440
<b>Total Purchases - Central Health</b>				<b>190,886,000.00</b>	<b>190,931,383.05</b>	<b>404,025.48</b>			<b>0.957</b>

**Central Health**  
**Beg- End Balance Report FY 2020**  
**9/30/2019 - 09/30/2020**

Description	CUSIP/Ticker	Beginning Face Amount/Shares	Coupon Rate	Beginning Cost Value	Maturity Date	Ending YTM @ Cost	Ending Cost Value	Total Buys	Total Sells	Ending MV	Ending Market Accrued Interest	Unrealized Gain/Loss-CV
<b>Healthcare Operating</b>												
ING 0 10/1/2019	45685RX10	5,000,000.00	0.000	4,935,895.83	10/01/2019		0.00	0.00	5,000,000.00	0.00	0.00	0.00
Toyota 0 10/2/2019	89233HX25	5,000,000.00	0.000	4,921,330.56	10/02/2019		0.00	0.00	5,000,000.00	0.00	0.00	0.00
NYC GO Bonds 2 12/1/2019	64966MGF0	4,000,000.00	2.000	4,042,520.00	12/01/2019		0.00	0.00	4,000,000.00	0.00	0.00	0.00
Georgia Power Muni Rev Bond 3.78 1/1/2020	373541X48	1,285,000.00	3.780	1,348,209.15	01/01/2020		0.00	0.00	1,285,000.00	0.00	0.00	0.00
FFCB 1.67 2/6/2020-18	3133EG5R2	9,000,000.00	1.670	9,000,000.00	02/06/2020		0.00	0.00	9,048,430.00	0.00	0.00	0.00
Texas A&M Univ Rev Bonds 2.193 5/15/2020	88213ABR5	3,000,000.00	2.193	3,026,880.00	05/15/2020		0.00	0.00	3,000,000.00	0.00	0.00	0.00
ING CP (Disco) 0 7/9/2020	4497W0G93	0.00	0.000	0.00	07/09/2020		0.00	6,935,250.00	7,000,000.00	0.00	0.00	0.00
Texas TERM 1.7 7/10/2020	TERMCP071020	0.00	1.700	0.00	07/10/2020		0.00	5,000,000.00	5,000,000.00	0.00	0.00	0.00
FHLB 0 7/15/2020	313384ZK8	0.00	0.000	0.00	07/15/2020		0.00	6,949,808.06	7,000,000.00	0.00	0.00	0.00
Texas State Trans 4 8/27/2020	882724PY7	0.00	4.000	0.00	08/27/2020		0.00	8,240,800.44	8,000,000.00	0.00	0.00	0.00
T-Note 1.375 8/31/2020	912828L32	0.00	1.375	0.00	08/31/2020		0.00	10,046,102.34	10,000,000.00	0.00	0.00	0.00
Toyota Motor Credit 0 9/2/2020	89233GJ23	0.00	0.000	0.00	09/02/2020		0.00	5,919,480.00	6,000,000.00	0.00	0.00	0.00
FHLB 0 9/14/2020	313384F87	0.00	0.000	0.00	09/14/2020		0.00	11,999,328.12	12,101,000.00	0.00	0.00	0.00
Credit Suisse New York 0 10/9/2020	2254EAK93	0.00	0.000	0.00	10/09/2020	1.795	5,920,600.17	5,920,600.17	0.00	5,999,880.00	0.00	79,279.83
ING CP 0 10/13/2020	45685QKD0	0.00	0.000	0.00	10/13/2020	1.056	4,973,750.00	4,973,750.00	0.00	4,999,900.00	0.00	26,150.00
TexasTERM 0.3 12/11/2020	TERMCP121120	0.00	0.300	0.00	12/11/2020	0.300	5,000,000.00	5,000,000.00	0.00	5,000,000.00	3,369.86	0.00
FHLB 2.05 2/26/2021-19	3130AGZE8	12,000,000.00	2.050	12,000,000.00	02/26/2021		0.00	0.00	12,058,766.67	0.00	0.00	0.00
Florida St Board Admin Fin Corp Rev 2.638 7/1/2021	341271AB0	0.00	2.638	0.00	07/01/2021	1.000	5,871,068.00	5,918,487.52	0.00	5,861,145.60	37,565.12	-9,922.40
San Bernardino Cty COPS 2.03 10/1/2021	796815ZF8	0.00	2.030	0.00	10/01/2021	1.000	2,027,420.00	2,033,735.56	0.00	2,030,320.00	20,187.22	2,900.00
Harris County TX Transit 1.659 11/1/2021	41422EJX2	0.00	1.659	0.00	11/01/2021	0.951	1,090,843.20	1,092,087.45	0.00	1,093,068.00	7,415.73	2,224.80
CHIPPEWA VALLEY SCHOOLS GO 2.98 5/1/2022	170016YZ6	2,000,000.00	2.980	2,022,800.00	05/01/2022	2.603	2,022,800.00	0.00	0.00	2,085,220.00	24,667.78	62,420.00
FFCB 1.74 6/13/2022-20	3133ELDV3	0.00	1.740	0.00	06/13/2022		0.00	6,246,875.00	6,288,968.75	0.00	0.00	0.00
Oklahoma County, OK 1 9/1/2022	678720KL6	0.00	1.000	0.00	09/01/2022	0.300	4,662,698.00	4,664,742.44	0.00	4,664,952.00	3,705.56	2,254.00
City of Dallas Waterworks Rev 1.868 10/1/2022	23542JBH7	0.00	1.868	0.00	10/01/2022	0.333	5,154,300.00	5,199,183.89	0.00	5,145,750.00	46,440.56	-8,550.00
FFCB 1.9 9/6/2023-20	3133ELFF6	0.00	1.900	0.00	09/06/2023		0.00	14,598,851.46	14,609,635.54	0.00	0.00	0.00
FHLB 1.7 10/17/2023-19	3130A9QZ7	0.00	1.700	0.00	10/17/2023		0.00	10,072,138.89	10,000,000.00	0.00	0.00	0.00
FHLMC 0.75 10/27/2023-20	3134GVMT2	0.00	0.750	0.00	10/27/2023	0.750	10,000,000.00	10,000,000.00	0.00	10,004,300.00	31,875.00	4,300.00
FFCB 1.93 10/30/2023-20	3133EK4A1	0.00	1.930	0.00	10/30/2023	1.930	10,000,000.00	10,000,000.00	0.00	10,014,600.00	80,416.67	14,600.00
FHLMC 0.625 10/30/2023-21	3134GVPE2	0.00	0.625	0.00	10/30/2023	0.625	10,000,000.00	10,000,000.00	0.00	10,023,650.00	26,041.67	23,650.00
FHLMC 1.9 12/18/2023-20	3134GUXE5	0.00	1.900	0.00	12/18/2023		0.00	10,000,000.00	10,000,000.00	0.00	0.00	0.00
Texas Tech University 2.939 2/15/2024	882806FP2	0.00	2.939	0.00	02/15/2024	1.524	525,840.00	529,187.19	0.00	538,010.00	1,836.88	12,170.00
FHLMC 0.5 8/12/2024-21	3134GWKB1	0.00	0.500	0.00	08/12/2024	0.500	10,000,000.00	10,000,000.00	0.00	10,010,930.00	6,666.67	10,930.00
FNMA 0.41 8/12/2024-22	3136G4H22	0.00	0.410	0.00	08/12/2024	0.423	9,995,000.00	9,995,000.00	0.00	10,016,440.00	6,833.33	21,440.00
FHLMC 0.44 9/24/2024-21	3134GWSR8	0.00	0.440	0.00	09/24/2024	0.440	10,000,000.00	10,000,000.00	0.00	10,001,790.00	733.33	1,790.00
<b>Healthcare Operating</b>		<b>41,285,000.00</b>		<b>41,297,635.54</b>		<b>0.845</b>	<b>97,244,319.37</b>	<b>191,335,408.53</b>	<b>135,391,800.96</b>	<b>97,489,955.60</b>	<b>297,755.38</b>	<b>245,636.23</b>

STATE OF TEXAS

COUNTY OF TRAVIS

CENTRAL HEALTH

Whereas, it appears to the Board of Managers of the Central Health, Travis County, Texas that there are sufficient funds on hand over and above those of immediate need for operating demand,

Now, Therefore, the Board of Managers hereby orders

- 1.) that the County Treasurer of Travis County, Texas, acting on behalf of Central Health, execute the investment of these funds in the total amount of \$38,955,958.60 in legally authorized securities as stipulated in the Travis County Healthcare District Investment and Collateral Policy for the periods as indicated in Attachment A, which consists of 16 pages.
- 2.) that the County Treasurer, acting on behalf of Central Health, take and hold in safekeeping all individual security investment instruments, relinquishing same only by order of the Board of Managers or for surrender at maturity.

Date: December 16, 2020

\_\_\_\_\_  
CHAIR, BOARD OF MANAGERS

\_\_\_\_\_  
VICE CHAIR, BOARD OF MANAGERS

\_\_\_\_\_  
MANAGER

\_\_\_\_\_  
MANAGER

\_\_\_\_\_  
MANAGER

\_\_\_\_\_  
MANAGER

\_\_\_\_\_  
MANAGER

\_\_\_\_\_  
MANAGER

\_\_\_\_\_  
MANAGER



CENTRAL HEALTH  
INVESTMENT DEPARTMENT  
SECURITY TRANSACTION FORM

DATE: 11/2/2020

TIME: 10:30

The following transaction was executed on behalf of Central Health:

DESCRIPTION:	TexPool	FUND NAME:	CENTRAL HEALTH
PAR VALUE:	323,000.00	SAFEKEEPING NO:	N/A
CPN/DISC RATE:	N/A	PRICE:	100%
MATURITY DATE:	N/A	BOND EQ. YIELD:	0.1304%
PRINCIPAL:	323,000.00	PURCHASED THRU:	TexPool
ACCRUED INT:	N/A	BROKER:	N/A
TOTAL DUE:	323,000.00	CUSIP #:	N/A
TRADE DATE:	11/2/2020	SETTLEMENT DATE:	11/2/2020

AUTHORIZED BY:

*Reagan Grimes*  
CASH/INVESTMENT MANAGER

CENTRAL HEALTH  
INVESTMENT DEPARTMENT  
SECURITY TRANSACTION FORM

DATE: 11/2/2020

TIME: 10:30

The following transaction was executed on behalf of Central Health:

DESCRIPTION:	TexPool	FUND NAME:	CENTRAL HEALTH
PAR VALUE:	8,958.60	SAFEKEEPING NO:	N/A
CPN/DISC RATE:	N/A	PRICE:	100%
MATURITY DATE	N/A	BOND EQ. YIELD:	0.1304%
PRINCIPAL:	8,958.60	PURCHASED THRU:	TexPool
ACCRUED INT:	N/A	BROKER:	N/A
TOTAL DUE:	8,958.60	CUSIP #:	N/A
TRADE DATE:	11/2/2020	SETTLEMENT DATE:	11/2/2020

AUTHORIZED BY: Reagan Grimes  
CASH/INVESTMENT MANAGER

CENTRAL HEALTH  
INVESTMENT DEPARTMENT  
SECURITY TRANSACTION FORM

DATE: 11/2/2020

TIME: 10:30

The following transaction was executed on behalf of Central Health:

DESCRIPTION:	TexPool	FUND NAME:	CENTRAL HEALTH
PAR VALUE:	29,800.00	SAFEKEEPING NO:	N/A
CPN/DISC RATE:	N/A	PRICE:	100%
MATURITY DATE	N/A	BOND EQ. YIELD:	0.1304%
PRINCIPAL:	29,800.00	PURCHASED THRU:	TexPool
ACCRUED INT:	N/A	BROKER:	N/A
TOTAL DUE:	29,800.00	CUSIP #:	N/A
TRADE DATE:	11/2/2020	SETTLEMENT DATE:	11/2/2020

AUTHORIZED BY:

Reagan Grimes  
CASH/INVESTMENT MANAGER

CENTRAL HEALTH  
INVESTMENT DEPARTMENT  
SECURITY TRANSACTION FORM

DATE: 10/23/2020

TIME: 11:00 AM

The following transaction was executed on behalf of Central Health:

DESCRIPTION:	ALA. ST PUB SCH & COLL. AUTH - REV TAX	FUND NAME:	CENTRAL HEALTH OPERATING
PAR VALUE:	\$ 1,000,000.00	SAFEKEEPING NO:	P 31317
COUPON / DISCOUNT RATE	0.353%	PRICE:	100.0000000
MATURITY DATE:	9/1/2022	US TREASURY CONVENTION YLD	0.3530%
PRINCIPAL:	\$ 1,000,000.00	PURCHASED THROUGH:	WELLS FARGO
ACCRUED INT:	\$ 0.00	BROKER:	MIKE MINAHAN
TOTAL DUE:	\$ 1,000,000.00	CUSIP #:	010609FW0
TRADE DATE:	10/23/2020	SETTLEMENT DATE:	11/4/2020

AUTHORIZED BY: *Deborah A. Lauder milk*

---

CENTRAL HEALTH  
INVESTMENT DEPARTMENT  
SECURITY TRANSACTION FORM

DATE: 10/23/2020

TIME: 11:00 AM

The following transaction was executed on behalf of Central Health:

DESCRIPTION:	ALA. ST PUB SCH & COLL. AUTH - REV TAX	FUND NAME:	CENTRAL HEALTH OPERATING
PAR VALUE:	\$ 1,000,000.00	SAFEKEEPING NO:	P 31317
COUPON / DISCOUNT RATE	0.353%	PRICE:	100.0000000
MATURITY DATE:	9/1/2022	US TREASURY CONVENTION YLD	0.3530%
PRINCIPAL:	\$ 1,000,000.00	PURCHASED THROUGH:	WELLS FARGO
ACCRUED INT:	\$ 0.00	BROKER:	MIKE MINAHAN
TOTAL DUE:	\$ 1,000,000.00	CUSIP #:	010609FW0
TRADE DATE:	10/23/2020	SETTLEMENT DATE:	11/4/2020

AUTHORIZED BY: *Deborah A. Lauder milk*

---

CENTRAL HEALTH  
INVESTMENT DEPARTMENT  
SECURITY TRANSACTION FORM

DATE: 10/16/2020

TIME: 2:00 PM

The following transaction was executed on behalf of Central Health:

DESCRIPTION:	COMONWEALTH OF VA GO - TAX	FUND NAME:	CENTRAL HEALTH OPERATING
PAR VALUE:	\$ 5,000,000.00	SAFEKEEPING NO:	P 31317
COUPON / DISCOUNT RATE	1.000%	PRICE:	101.7920000
MATURITY DATE:	6/1/2023	US TREASURY CONVENTION YLD	0.3000%
PRINCIPAL:	\$ 5,089,600.00	PURCHASED THROUGH:	WELLS FARGO
ACCRUED INT:	\$ 0.00	BROKER:	MIKE MINAHAN
TOTAL DUE:	\$ 5,089,600.00	CUSIP #:	9281094A2
TRADE DATE:	10/16/2020	SETTLEMENT DATE:	11/5/2020

AUTHORIZED BY: *Deborah A. Lauder milk*

---

CENTRAL HEALTH  
INVESTMENT DEPARTMENT  
SECURITY TRANSACTION FORM

DATE: 10/29/2020

TIME: 8:00 AM

The following transaction was executed on behalf of Central Health:

DESCRIPTION:	UPPER OCCOQUAN VA SEWAGE - REV	FUND NAME:	CENTRAL HEALTH OPERATING
PAR VALUE:	\$ 3,110,000.00	SAFEKEEPING NO:	P 31317
COUPON / DISCOUNT RATE	0.530%	PRICE:	100.0000000
MATURITY DATE:	7/1/2023	US TREASURY CONVENTION YLD	0.5300%
PRINCIPAL:	\$ 3,110,000.00	PURCHASED THROUGH:	WELLS FARGO
ACCRUED INT:	\$ 0.00	BROKER:	MIKE MINAHAN
TOTAL DUE:	\$ 3,110,000.00	CUSIP #:	916277PP5
TRADE DATE:	10/29/2020	SETTLEMENT DATE:	11/12/2020

AUTHORIZED BY: *Deborah A. Lauder milk*

---

CENTRAL HEALTH  
INVESTMENT DEPARTMENT  
SECURITY TRANSACTION FORM

DATE: 11/12/2020

TIME: 10:30

The following transaction was executed on behalf of Central Health:

DESCRIPTION:	Texpool	FUND NAME:	CENTRAL HEALTH
PAR VALUE:	69,000.00	SAFEKEEPING NO:	N/A
CPN/DISC RATE:	N/A	PRICE:	100%
MATURITY DATE	N/A	BOND EQ. YIELD:	0.1360%
PRINCIPAL:	69,000.00	PURCHASED THRU:	Texpool
ACCRUED INT:	N/A	BROKER:	N/A
TOTAL DUE:	69,000.00	CUSIP #:	N/A
TRADE DATE:	11/12/2020	SETTLEMENT DATE:	11/12/2020

AUTHORIZED BY:

*Reagan Grimes*

CASH/INVESTMENT MANAGER



CENTRAL HEALTH  
INVESTMENT DEPARTMENT  
SECURITY TRANSACTION FORM

DATE: 11/17/2020

TIME: 10:30

The following transaction was executed on behalf of Central Health:

DESCRIPTION:	TexPool	FUND NAME:	CENTRAL HEALTH
PAR VALUE:	72,000.00	SAFEKEEPING NO:	N/A
CPN/DISC RATE:	N/A	PRICE:	100%
MATURITY DATE:	N/A	BOND EQ. YIELD:	0.1232%
PRINCIPAL:	72,000.00	PURCHASED THRU:	TexPool
ACCRUED INT:	N/A	BROKER:	N/A
TOTAL DUE:	72,000.00	CUSIP #:	N/A
TRADE DATE:	11/17/2020	SETTLEMENT DATE:	11/17/2020

AUTHORIZED BY:

   
CASH/INVESTMENT MANAGER

CENTRAL HEALTH  
INVESTMENT DEPARTMENT  
SECURITY TRANSACTION FORM

DATE: 11/5/2020

TIME: 9:30 AM

The following transaction was executed on behalf of Central Health:

DESCRIPTION:	FNMA Callable	FUND NAME:	CENTRAL HEALTH OPERATING
PAR VALUE:	\$ 10,000,000.00	SAFEKEEPING NO:	P 31317
COUPON / DISCOUNT RATE	0.420%	PRICE:	100.0000000
MATURITY DATE:	11/18/2024	US TREASURY CONVENTION YLD	0.4200%
PRINCIPAL:	\$ 10,000,000.00	PURCHASED THROUGH:	MULTIBANK SECURITIES
ACCRUED INT:	\$ 0.00	BROKER:	CAROL MACKOFF
TOTAL DUE:	\$ 10,000,000.00	CUSIP #:	3135GA3E9
TRADE DATE:	11/5/2020	SETTLEMENT DATE:	11/18/2020

AUTHORIZED BY:

*Deborah A. Lauder milk*

CENTRAL HEALTH  
INVESTMENT DEPARTMENT  
SECURITY TRANSACTION FORM

DATE: 11/19/2020

TIME: 10:30

The following transaction was executed on behalf of Central Health:

DESCRIPTION	Texpool	FUND NAME:	CENTRAL HEALTH
PAR VALUE:	94,000.00	SAFEKEEPING NO:	N/A
CPN/DISC RATE	N/A	PRICE:	100%
MATURITY DAT	N/A	BOND EQ. YIELD:	0.1151%
PRINCIPAL:	94,000.00	PURCHASED THRU:	Texpool
ACCRUED INT	N/A	BROKER:	N/A
TOTAL DUE:	94,000.00	CUSIP #:	N/A
TRADE DATE:	11/19/2020	SETTLEMENT DATE:	11/19/2020

AUTHORIZED BY:

*Reagan Grimes*

CASH/INVESTMENT MANAGER

CENTRAL HEALTH  
INVESTMENT DEPARTMENT  
SECURITY TRANSACTION FORM

DATE: 11/20/2020

TIME: 10:30

The following transaction was executed on behalf of Central Health:

DESCRIPTION:	TEXPOOL	FUND NAME:	CENTRAL HEALTH
PAR VALUE:	\$451,000.00	SAFEKEEPING NO:	N/A
CPN/DISC RATE:	N/A	PRICE:	100%
MATURITY DATE	N/A	YIELD	0.1080%
PRINCIPAL:	\$451,000.00	PURCHASED THRU:	TEXPOOL
ACCRUED INT:	N/A	BROKER:	N/A
TOTAL DUE:	\$451,000.00	CUSIP #:	N/A
TRADE DATE:	11/20/2020	SETTLEMENT DATE:	11/20/2020

AUTHORIZED BY:



CASH/INVESTMENT MANAGER

CENTRAL HEALTH  
INVESTMENT DEPARTMENT  
SECURITY TRANSACTION FORM

DATE: 11/17/2020

TIME: 10:30 AM

The following transaction was executed on behalf of Central Health:

DESCRIPTION:	FHLMC Callable	FUND NAME:	CENTRAL HEALTH OPERATING
PAR VALUE:	\$ 7,500,000.00	SAFEKEEPING NO:	P 31317
COUPON / DISCOUNT RATE	0.270%	PRICE:	100.0000000
MATURITY DATE:	8/23/2023	US TREASURY CONVENTION YLD	0.2700%
PRINCIPAL:	\$ 7,500,000.00	PURCHASED THROUGH:	WELLS FARGO
ACCRUED INT:	\$ 0.00	BROKER:	MIKE MINAHAN
TOTAL DUE:	\$ 7,500,000.00	CUSIP #:	3134GXCY8
TRADE DATE:	11/17/2020	SETTLEMENT DATE:	11/23/2020

AUTHORIZED BY:

*Deborah A. Laudermill*

CENTRAL HEALTH  
INVESTMENT DEPARTMENT  
SECURITY TRANSACTION FORM

DATE: 11/23/2020

TIME: 2:30 PM

The following transaction was executed on behalf of Central Health:

DESCRIPTION:	FNMA Bullet	FUND NAME:	CENTRAL HEALTH OPERATING
PAR VALUE:	\$ 10,000,000.00	SAFEKEEPING NO:	P 31317
COUPON / DISCOUNT RATE	0.250%	PRICE:	99.8860000
MATURITY DATE:	11/27/2023	US TREASURY CONVENTION YLD	0.2881%
PRINCIPAL:	\$ 9,988,600.00	PURCHASED THROUGH:	MULTIBANK SECURITIES
ACCRUED INT:	\$ 0.00	BROKER:	CAROL MACKOFF
TOTAL DUE:	\$ 9,988,600.00	CUSIP #:	3135G06H1
TRADE DATE:	11/23/2020	SETTLEMENT DATE:	11/25/2020

AUTHORIZED BY:

Deborah A. Lauder milk

CENTRAL HEALTH  
INVESTMENT DEPARTMENT  
SECURITY TRANSACTION FORM

DATE: 11/25/2020

TIME: 10:30

The following transaction was executed on behalf of Central Health:

DESCRIPTION:	TexPool	FUND NAME:	CENTRAL HEALTH
PAR VALUE:	56,000.00	SAFEKEEPING NO:	N/A
CPN/DISC RATE:	N/A	PRICE:	100%
MATURITY DATE	N/A	BOND EQ. YIELD:	0.1056%
PRINCIPAL:	56,000.00	PURCHASED THRU:	TexPool
ACCRUED INT:	N/A	BROKER:	N/A
TOTAL DUE:	56,000.00	CUSIP #:	N/A
TRADE DATE:	11/25/2020	SETTLEMENT DATE:	11/25/2020

AUTHORIZED BY:

Deborah A. Laudermilk  
CASH/INVESTMENT MANAGER

CENTRAL HEALTH  
INVESTMENT DEPARTMENT  
SECURITY TRANSACTION FORM

DATE: 11/30/2020

TIME: 10:30

The following transaction was executed on behalf of Central Health:

DESCRIPTION:	Texpool	FUND NAME:	CENTRAL HEALTH
PAR VALUE:	164,000.00	SAFEKEEPING NO:	N/A
CPN/DISC RATE:	N/A	PRICE:	100%
MATURITY DATE	N/A	BOND EQ. YIELD:	0.1137%
PRINCIPAL:	164,000.00	PURCHASED THRU:	Texpool
ACCRUED INT:	N/A	BROKER:	N/A
TOTAL DUE:	164,000.00	CUSIP #:	N/A
TRADE DATE:	11/30/2020	SETTLEMENT DATE:	11/30/2020

AUTHORIZED BY:

*Reagan Grimes*

CASH/INVESTMENT MANAGER



CENTRAL HEALTH MONTHLY INVESTMENT REPORT  
 PORTFOLIO STATISTICS

DATE: November 30, 2020

By Fund Type			
Operating		\$ 180,339,425.52	95.39%
LPPF		8,716,225.00	4.61%
Bond Proceeds		-	0.00%
Other		-	0.00%
	Total Portfolio	<u>\$ 189,055,650.52</u>	<u>100.00%</u>

By Security Type			
<b>Operating-</b>			
TexasDAILY		\$ 7,167,588.97	3.97%
TexPool		\$ 50,843,840.64	28.19%
TexSTAR		\$ 7,099,826.71	3.94%
TexasTERM CP		5,000,000.00	2.77%
Non-Int Bearing Bank Account		1,190,000.00	0.66%
Certificates of Deposit		-	0.00%
Treasury Securities		-	0.00%
Government Agencies		77,483,600.00	42.97%
Commercial Paper		-	0.00%
Municipal Bonds		31,554,569.20	17.50%
	Total	<u>\$ 180,339,425.52</u>	<u>100.00%</u>

**LPPF-**

TexPool		8,716,225.00	100.00%
	Total	<u>\$ 8,716,225.00</u>	<u>100.00%</u>

**Bond Proceeds-**

TexPool		\$ -	#DIV/0!
	Total	<u>\$ -</u>	<u>#DIV/0!</u>

Compared to Policy Limits			Actual %	Guidelines
TexasDAILY		7,167,588.97	3.82%	30.00%
TexPool		59,560,065.64	31.70%	50.00%
TexSTAR		7,099,826.71	3.78%	30.00%
TexasTERM CP		5,000,000.00	2.66%	30.00%
	Total LGIPS	<u>\$ 78,827,481.32</u>	<u>41.96%</u>	<u>70.00%</u>
Certificates of Deposit		-	0.00%	50.00%
Treasury Securities		-	0.00%	100.00%
Government Agencies		77,483,600.00	41.24%	75.00%
Commercial Paper		-	0.00%	20.00%
Municipal Bonds		31,554,569.20	16.80%	20.00%
		<u>\$ 187,865,650.52</u>	<u>100.00%</u>	

Commercial Paper by Entity as a Percentage of Portfolio

	0.00%	5.00%
\$ -	<u>0.00%</u>	<u>20.00%</u>

Municipal Bonds by Entity as a Percentage of Portfolio

Alabama ST Pub Sch & Clg 2021	\$ 1,000,000.00	0.55%	5.00%
Chippewa Valley School Go Bonds	\$ 2,022,800.00	1.12%	5.00%
Florida St Board Admin Fin Corp Rev	\$ 5,871,068.00	3.26%	5.00%
San Bernardino COPS	\$ 2,027,420.00	1.12%	5.00%
Harris County TX Transit	\$ 1,090,843.20	0.60%	5.00%
Oklahoma County OK ISD	\$ 4,662,698.00	2.59%	5.00%
Alabama ST Pub Sch & Clg 2022	\$ 1,000,000.00	0.55%	5.00%
Texas Tech Univ	\$ 525,840.00	0.29%	5.00%
Commonwealth of Virginia - GO	\$ 5,089,600.00	2.82%	
City of Dallas Waterworks	\$ 5,154,300.00	2.86%	5.00%
Upper Occoquan VA - Rev	\$ 3,110,000.00	1.72%	
	<u>\$ 31,554,569.20</u>	<u>17.50%</u>	<u>25.00%</u>

Investment Revenue & Accrued Interest

November-20

Fiscal YTD

Interest/Dividends-		
TexasDAILY	\$ 1,407.79	\$ 4,343.40
TexPool	6,528.81	\$ 12,463.31
TexSTAR	587.17	\$ 1,530.94
TexasTERM CP	0.00	\$ -
Certificates of Deposit	0.00	\$ -
Treasury Securities	0.00	\$ -
Government Agencies	0.00	\$ 165,250.00
Commercial Paper	0.00	\$ -
Municipal Bonds	38,758.60	\$ 105,758.60
	<u>\$ 47,282.37</u>	<u>\$ 289,346.25</u>
Discounts, Premiums, & Accrued Interest		
TexasTERM CP	\$ 1,232.87	\$ 1,232.87
-less previous accruals	0.00	\$ -
Certificates of Deposit	0.00	\$ -
-less previous accruals	0.00	\$ -
Treasury Securities	0.00	\$ -
-less previous accruals	0.00	\$ -
Government Agencies	21,842.83	\$ 35,485.03
-less previous accruals	0.00	\$ (138,333.34)
Commercial Paper	0.00	\$ 5,826.31
-less previous accruals	0.00	\$ -
Municipal Bonds	32,658.11	\$ 57,644.19
-less previous accruals	(54,945.68)	\$ (131,118.34)
	<u>\$ 788.13</u>	<u>\$ (169,263.28)</u>
Total Investment Revenue & Accrued Interest	<u>\$ 48,070.50</u>	<u>\$ 120,082.97</u>

STATE OF TEXAS

COUNTY OF TRAVIS

CENTRAL HEALTH - LPPF

Whereas, it appears to the Board of Managers of the Central Health, Travis County, Texas that there are sufficient funds on hand over and above those of immediate need for LPPF demand,

Now, Therefore, the Board of Managers hereby orders

- 1.) that the County Treasurer of Travis County, Texas, acting on behalf of Central Health LPPF, execute the investment of these funds in the total amount of \$152,000.00 in legally authorized securities as stipulated in the Travis County Healthcare District Investment and Collateral Policy for the periods as indicated in Attachment A, which consists of 1 pages.
- 2.) that the County Treasurer, acting on behalf of Central Health LPPF, take and hold in safekeeping all individual security investment instruments, relinquishing same only by order of the Board of Managers or for surrender at maturity.

Date: December 16, 2020

\_\_\_\_\_  
CHAIR, BOARD OF MANAGERS

\_\_\_\_\_  
VICE CHAIR, BOARD OF MANAGERS

\_\_\_\_\_  
MANAGER

\_\_\_\_\_  
MANAGER

\_\_\_\_\_  
MANAGER

\_\_\_\_\_  
MANAGER

\_\_\_\_\_  
MANAGER

\_\_\_\_\_  
MANAGER

\_\_\_\_\_  
MANAGER

CENTRAL HEALTH  
INVESTMENT DEPARTMENT  
SECURITY TRANSACTION FORM

DATE: 11/12/2020

TIME: 10:30

The following transaction was executed on behalf of Central Health:

DESCRIPTION:	TEXPOOL	FUND NAME:	CENTRAL HEALTH LPPF
PAR VALUE:	152,000.00	SAFEKEEPING NO:	N/A
CPN/DISC RATE:	N/A	PRICE:	100%
MATURITY DATE	N/A	BOND EQ. YIELD:	0.1360%
PRINCIPAL:	152,000.00	PURCHASED THRU:	TEXPOOL
ACCRUED INT:	N/A	BROKER:	N/A
TOTAL DUE:	152,000.00	CUSIP #:	N/A
TRADE DATE:	11/12/2020	SETTLEMENT DATE:	11/12/2020

AUTHORIZED BY:

*Reagan Grimes*

CASH/INVESTMENT MANAGER



CENTRAL HEALTH

**Our Vision**

Central Texas is a model healthy community.

**Our Mission**

By caring for those who need it most, Central Health improves the health of our community.

**Our Values**

Central Health will achieve excellence through:

*Stewardship* - We maintain public trust through fiscal discipline and open and transparent communication.

*Innovation* - We create solutions to improve healthcare access.

*Respect* - We honor our relationship with those we serve and those with whom we work.

*Collaboration* - We partner with others to improve the health of our community.

**BOARD MEETING**

**December 16, 2020**

**AGENDA ITEM C2**

Receive a report on and accept the preliminary November 2020 financial statements for Central Health and the Community Care Collaborative as recommended by the Budget and Finance Committee.



# Central Health

## Financial Statement Presentation

FY 2021 – as of Nov 30, 2020 (Preliminary)

Central Health Board of Managers

December 16, 2020

Lisa Owens, Deputy CFO



- Slide 2 Index
- Slide 3 Highlights
- Slide 4 Balance Sheet - Assets
- Slide 5 Balance Sheet - Liabilities & Net Assets
- Slide 6 Sources & Uses
- Slide 7 HCD - Summary
- Slide 8 HCD - Blank Page
- Slide 9 HCD - IGT & HCD Services
- Slide 10 HCD - Operating Cost
- Slide 11 HCD - Primary Care
- Slide 12 HCD - Specialty Care

Note: HCD = Health Care Delivery



- Year-to-date through November, collected net property tax revenue is \$2 million compared to \$9 million as of November 2019.
- Tax collected through November 2020 is 1% of the adjusted tax levy compared to 4% as of November 2019.
- Healthcare Delivery is \$16 million for the two months ending 11/30/2020.
- GAAP reporting Net Assets increased \$81 million year-over-year.
- TCHD LPPF total restricted balance of LPPF as of 11/30/2020 is \$8 million.

GAAP: Generally Accepted Accounting Principles refer to a common set of accounting principles, standards, and procedures issued by the Financial Accounting Standards Board. GAAP primary focus is to improve clarity, consistency, and comparability of the communication of financial information.





Assets	Preliminary as	
	of 11/30/2020	as of 11/30/2019
Current Assets		
Cash and cash equivalents	1,021,076	1,590,655
Short-term investments	173,175,933	92,246,569
Ad valorem taxes receivable	241,239,964	211,042,626
Other receivables	2,158,250	3,998,275
Prepaid expenses	1,880,055	1,140,817
Total Current Assets	<u>419,475,278</u>	<u>310,018,942</u>
Restricted Cash and Investments or Noncurrent		
Restricted for capital acquisition	6,714,072	5,751,552
Sendero paid-in-capital	71,000,000	71,000,000
Working capital advance to CommUnityCare	4,000,000	4,000,000
Sendero Surplus Debenture	37,083,000	37,083,000
Restricted TCHD LPPF Cash & Investments	8,335,940	2,078,973
Total Restricted Cash and Investments or Noncurrent	<u>127,133,012</u>	<u>119,913,525</u>
Capital Assets		
Land	13,425,967	12,546,211
Buildings and improvements	132,724,885	130,395,330
Equipment and furniture	10,030,421	9,576,645
Capital Projects in progress	3,603,894	1,698,207
Less accumulated depreciation	(48,218,028)	(43,824,463)
Total Capital Assets	<u>111,567,138</u>	<u>110,391,931</u>
<b>Total Assets</b>	<u><u>658,175,429</u></u>	<u><u>540,324,397</u></u>



<b>Liabilities</b>	<b>Preliminary</b>	
	<b>as of</b>	<b>as of</b>
	<b>11/30/2020</b>	<b>11/30/2019</b>
<b>Current Liabilities</b>		
Accounts payable	16,639,818	14,962,950
Salaries and benefits payable	1,512,248	1,327,011
Other Payables	7,276	91,853
Debt service payable, short-term	1,202,948	1,146,610
Deferred tax revenue	239,735,792	208,655,534
Other deferred revenue	610,000	1,440,712
<b>Total Current Liabilities</b>	<b>259,708,082</b>	<b>227,624,670</b>
<b>Restricted or Noncurrent Liabilities</b>		
Funds held for TCHD LPPF	8,335,940	2,078,973
Debt service payable, long-term	6,105,000	7,285,000
Deferred Revenue	-	610,000
<b>Total Restricted of Noncurrent Liabilities</b>	<b>14,440,940</b>	<b>9,973,973</b>
<b>Total Liabilities</b>	<b>274,149,021</b>	<b>237,598,642</b>
<b>Net Assets</b>		
Unrestricted	272,459,269	192,333,824
Investment in Capital Assets	111,567,138	110,391,931
<b>Total Net Assets</b>	<b>384,026,407</b>	<b>302,725,755</b>
<b>Liabilities and Net Assets</b>	<b>658,175,429</b>	<b>540,324,397</b>



Sources / Uses	Nov 2020	FY21 YTD	FY21 Budget	Percent of Budget Used	FY20 YTD
<b>Sources</b>					
Property Tax Revenue	2,119,945	2,167,931	234,057,519	1%	9,361,548
Lease Revenue	862,753	1,724,476	12,909,866	13%	1,715,682
Other Revenue	48,073	123,968	1,720,000	7%	283,397
Tobacco Settlement Revenue	-	-	2,800,000	0%	-
Contingency Reserve (Carryforward)	-	-	115,856,728	0%	-
<b>Total Sources</b>	<b>3,030,771</b>	<b>4,016,375</b>	<b>367,344,113</b>	<b>1%</b>	<b>11,360,627</b>
<b>Uses of Funds</b>					
<b>Healthcare Delivery</b>	<b>8,140,055</b>	<b>15,846,417</b>	<b>353,858,894</b>	<b>4%</b>	<b>23,690,392</b>
<b>Administrative Program</b>					
Salaries and benefits	359,426	676,476	5,561,651	12%	760,508
Consulting Fees	17,924	24,091	1,259,570	2%	163,531
Legal Fees	71,391	177,398	1,497,136	12%	105,583
Other Purchase Goods and Services	69,860	176,622	3,081,046	6%	159,279
<b>Total Administrative Program</b>	<b>518,601</b>	<b>1,054,587</b>	<b>11,399,403</b>	<b>9%</b>	<b>1,188,901</b>
<b>Tax Collection Expenses</b>	<b>119,630</b>	<b>200,059</b>	<b>2,085,816</b>	<b>10%</b>	<b>185,002</b>
<b>Total Uses</b>	<b>8,778,286</b>	<b>17,101,063</b>	<b>367,344,113</b>	<b>5%</b>	<b>25,064,295</b>
<b>Excess Sources / (Uses)</b>	<b>(5,747,515)</b>	<b>(13,084,688)</b>			<b>(13,703,668)</b>



Healthcare Delivery Summary	Nov 2020	FY21 YTD	FY21 Budget	Percent of Budget Used	FY20 YTD
<b>Inter-Governmental Transfers (IGTs)</b>	-	-	23,528,575	0%	7,301,891
<b>Healthcare Services</b>					
Community Health Care Initiatives Fund	-	-	875,000	0%	-
Primary Care - (see detail on Slide 11)	4,403,628	8,026,936	56,935,000	14%	8,412,758
Specialty Care, incld Dental & Behavioral Health	490,675	1,117,112	14,448,856	8%	1,386,666
Pharmacy	627,813	1,633,464	13,250,000	12%	1,934,013
Post Acute Care	-	-	5,400,000	0%	-
All Other Healthcare Services	40,583	78,000	4,469,990	2%	286,053
Indigent Care & Hospital Performance Incentive	-	-	59,700,000	0%	-
<b>Subtotal Healthcare Services</b>	<b>5,562,699</b>	<b>10,855,512</b>	<b>155,078,846</b>	<b>7%</b>	<b>12,019,490</b>
<b>ACA Premium Assist, Education, Enrollment</b>	<b>1,049,899</b>	<b>1,910,853</b>	<b>12,160,674</b>	<b>16%</b>	<b>1,096,744</b>
<b>Healthcare Facilities and Campus Redevelopment</b>	<b>256,182</b>	<b>330,935</b>	<b>6,097,472</b>	<b>5%</b>	<b>809,635</b>
<b>Healthcare Delivery Operating Costs</b>	<b>1,263,626</b>	<b>2,733,818</b>	<b>29,473,028</b>	<b>9%</b>	<b>2,408,225</b>
<b>Debt, Reserves and Transfers</b>	<b>7,649</b>	<b>15,299</b>	<b>127,520,299</b>	<b>0%</b>	<b>54,407</b>
<b>Total Healthcare Delivery</b>	<b>8,140,055</b>	<b>15,846,417</b>	<b>353,858,894</b>	<b>4%</b>	<b>23,690,392</b>



Details for Health Care Delivery on the following slides.

DRAFT



Healthcare Delivery - Detail	Nov 2020	FY21 YTD	FY21 Budget	Percent of Budget Used	FY20 YTD
<b>Intergovernmental Transfers (IGTs)</b>					
DSH - Disproportionate Share	-	-	-	0%	7,301,891
DSRIP - CCC	-	-	23,528,575	0%	-
<b>Subtotal Intergovernmental Transfers (IGTs)</b>	<b>-</b>	<b>-</b>	<b>23,528,575</b>	<b>0%</b>	<b>7,301,891</b>
<b>Healthcare Services</b>					
Community Health Care Initiatives	-	-	875,000	0%	-
Primary Care - (see detail on Slide 11)	4,403,628	8,026,936	56,935,000	14%	8,412,758
Specialty Care, incld Dental - (see detail on Slide 12)	397,758	953,779	12,565,000	8%	1,245,833
Specialty Care, Behavioral Health	92,917	163,333	1,883,856	9%	140,833
Pharmacy	627,813	1,633,464	13,250,000	12%	1,934,013
Post Acute Care	-	-	5,400,000	0%	-
Reproductive and Sexual Health	40,583	78,000	-	0%	96,375
Health care services, Pay for Success	-	-	600,000	0%	-
Medical Administration / ICC payment	-	-	719,990	0%	102,879
Primary & Specialty Care Reserves	-	-	3,150,000	0%	86,799
Indigent Care	-	-	57,000,000	0%	-
Hospital Performance Incentives	-	-	2,700,000	0%	-
<b>Subtotal Healthcare Services</b>	<b>5,562,699</b>	<b>10,855,512</b>	<b>155,078,846</b>	<b>7%</b>	<b>12,019,490</b>

(continued on next page)



Healthcare Delivery Detail (continued)	Nov 2020	FY21 YTD	FY21 Budget	Percent of Budget Used	FY20 YTD
<b>Healthcare Operations and Support</b>					
<b>ACA and Premium Assistance Programs</b>					
High Risk Premium Programs	638,883	1,265,413	8,600,000	15%	482,333
CHAP Program	209,194	386,659	2,959,354	13%	302,790
ACA Enrollment and Education Services	201,822	258,781	601,320	43%	311,621
<b>Subtotal ACA &amp; Premium Assist Program</b>	<b>1,049,899</b>	<b>1,910,853</b>	<b>12,160,674</b>	<b>16%</b>	<b>1,096,744</b>
<b>Healthcare Facilities and Campus</b>					
Salaries and benefits	7,298	14,702	368,579	4%	57,081
Consulting Services	(12,877)	26,350	1,730,000	2%	-
Legal Fees	44,820	35,768	174,500	20%	48,473
Other Goods & Svc incl. UT Ground Lease	216,941	254,115	3,824,393	7%	704,081
<b>Subtotal Healthcare Facilities and Campus</b>	<b>256,182</b>	<b>330,935</b>	<b>6,097,472</b>	<b>5%</b>	<b>809,635</b>
<b>Healthcare Delivery Operating Costs</b>					
Salaries and benefits	876,038	1,807,356	15,021,176	12%	1,593,016
Consulting Services	5,226	18,522	1,085,500	2%	6,407
Legal Fees	7,232	12,172	332,000	4%	26,262
Other Services and Purchased Goods	375,130	895,768	13,034,352	7%	782,540
<b>Subtotal HCD Operating Cost</b>	<b>1,263,626</b>	<b>2,733,818</b>	<b>29,473,028</b>	<b>9%</b>	<b>2,408,225</b>
<b>Debt Service, Reserves and Transfers</b>					
Debt Service	7,649	15,299	1,264,357	1%	54,407
FY2021 Capital reserve	-	-	34,100,000	-	-
Health Care Capital Line of Credit	-	-	1,091,773	-	-
FY2021 Hospital Services Reserve	-	-	4,000,000	-	-
FY2021 Contingency reserve appropriation	-	-	87,064,169	-	-
<b>Subtotal Debt, Reserves and Transfers</b>	<b>7,649</b>	<b>15,299</b>	<b>127,520,299</b>	<b>0%</b>	<b>54,407</b>
<b>Total Healthcare Delivery</b>	<b>8,140,055</b>	<b>15,846,417</b>	<b>353,858,894</b>	<b>4%</b>	<b>23,690,392</b>



Healthcare Delivery - Primary Care	Nov 2020	FY21 YTD	FY21 Budget	Percent of Budget Used	FY20 YTD
<b>Primary Care</b>					
CommUnity Care	3,482,461	6,328,103	44,885,000	14%	6,575,000
Lone Star Circle of Care	725,833	1,259,167	6,555,000	19%	1,258,400
People's Community Clinic	163,333	371,667	2,600,000	14%	416,667
Other Primary Care	32,000	68,000	2,895,000	2%	162,692
<b>Subtotal Primary Care Services</b>	<b>4,403,627</b>	<b>8,026,937</b>	<b>56,935,000</b>	<b>14%</b>	<b>8,412,759</b>

DRAFT

(continued on next page)





Healthcare Delivery - Specialty Care	Nov 2020	FY21 YTD	FY21 Budget	Percent of Budget Used	FY20 YTD
Specialty Care					
Ancillary Services	4,447	8,397	610,000	1%	16,667
Cardiology	11,481	22,963	265,000	9%	25,000
Consultation Services	0	0	500,000	0%	12,500
Dental Specialty	51,675	119,492	1,000,000	12%	166,667
Dermatology	32,459	63,234	550,000	11%	66,667
Durable Medical Equipment	0	0	115,000	0%	12,500
Ear, Nose & Throat ENT	28,500	57,667	350,000	16%	158,333
Endocrinology	21,455	42,910	575,000	7%	50,000
Gastroenterology	104,273	212,213	2,100,000	10%	166,667
General Surgery	(15,600)	9,400	300,000	3%	50,000
Gynecology IPU	(6,333)	2,200	600,000	0%	0
Nephrology	(18,217)	2,616	200,000	1%	0
Oncology	41,667	83,333	700,000	12%	100,000
Ophthalmology	62,708	162,875	1,575,000	10%	216,667
Orthotics & Prosthetics	4,667	13,000	200,000	7%	33,333
Podiatry	24,150	48,300	350,000	14%	41,667
Pulmonology	28,485	56,971	375,000	15%	62,500
Rheumatology	11,736	23,471	250,000	9%	25,000
Specialty Care	(2,163)	0	0	0%	16,667
Musculoskeletal	0	0	1,700,000	0%	0
Neurology	0	0	100,000	0%	0
Wound Care	12,369	24,738	150,000	16%	25,000
<b>Total Specialty Care</b>	<b>397,759</b>	<b>953,780</b>	<b>12,565,000</b>	<b>8%</b>	<b>1,245,835</b>



# Questions ? Comments ?

DRAFT



Balance Sheet (Assets) – Slide 4

**Current Assets**

Cash and Cash Equivalents – \$1.0M compared to \$1.0M November 2019

Short-term Investments – Short-term investments were \$173M at month-end and restricted investments of \$6.7M for capital acquisitions.

Ad Valorem Taxes Receivable – \$241.2M balance is composed of:

Gross Tax Receivables	\$ 244M
Taxable Assessed Valuation Adjustment	(175)K
Est. Allowance for Doubtful collections	(2.7)M
<b>Total Taxes Receivable</b>	<b>\$ 241M</b>

Other Receivables – Other receivables total \$2.1M and includes intercompany balances:

- CommUnityCare - \$1.1M
- Sendero - \$645K
- Community Care Collaborative - \$190K
- Accrued Interest - \$167K
- Miscellaneous Receivables – \$9K

Prepaid Expenses – \$1.9M balance composed of:

- Prepaid Tax Collection Fees - \$809
- Sendero Premium Assistance - \$789k
- Prepaid Insurance - \$60K
- TCAD Appraisal Fees - \$79K
- Software - \$106K
- Professional Services and Memberships - \$16K
- Deposits - \$21K

**Total Current Assets – \$419M**



November 2020 Preliminary Monthly Financial Statements (unaudited)

Page 2 of 6

Balance Sheet (Assets) – Slide 4 (continued)

**Restricted Cash & Investments or Noncurrent**

Investments Restricted for Capital Acquisition – \$6.7M in short-term securities restricted for capital acquisition.

Sendero Paid-in-Capital – \$71.0M (unchanged)

Working Capital Advance to CommUnityCare – \$4.0M (unchanged)

Sendero Surplus Debenture – \$37.1M (unchanged)

Restricted TCHD LPPF Cash & Investments - \$8.3M

Capital Assets – \$112M, net of accumulated depreciation

**Total Assets – \$658M**



**Current Liabilities** – Slide 5

Accounts Payable – Major components of the \$16.6M balance are:

- \$13.7M estimated IBNR for healthcare services.
- \$785K estimated month-end vendor invoices due.
- \$2.1M month-end vendor invoices due.

Salaries and Benefits Payable – \$1.5M balance is comprised of the accrued liability for salary costs unpaid at month-end, the value of accrued personal time off and various fringe benefit amounts withheld and not yet paid.

Other Payables – \$7K includes capital lease obligation related to medical equipment leased at Southeast Health and Wellness Center.

Debt Service Payable, Short-Term – \$1.2M in Certificates of Obligation Payable.

Deferred Tax Revenue - \$240M pending collection

Other Deferred Revenue - \$610K consists of the lease revenue \$610K for Block 164 Yr3 (FY21) from 2033 LLP

**Total Current Liabilities** – **\$260M**



**Restricted or Noncurrent Liabilities** – Slide 5 (continued)

Funds held for TCHD LPPF - \$8.3M receipts from participants in the LPPF.

Debt Service Payable, Long-Term – \$6.1M balance of the \$7.285M in General Obligation Bonds, Series 2020. This debt was originally issued in 2011 for the North Central clinic and refunded May 2020. Due annually on 3/1.

**Total Restricted or Noncurrent Liabilities – \$14M**

**Total Liabilities – \$274M**

**Net Assets**

Unrestricted Net Assets – \$272M

Investment in Capital Assets – \$112M

**Total Net Assets – \$384M**

**Total Liabilities and Net Assets – \$658M**



November 2020 Preliminary Monthly Financial Statements (unaudited)

Page 5 of 6

**Sources and Uses Report** – Slide 6

November financials → two months, 17% of the fiscal year.

**Sources – Total \$3.0M for the month**

Property Tax Revenue – Net property tax revenue for the month was \$2.1M. Net revenue includes \$2.2M current month's collections; \$27k Penalties and Interest; (\$106)k in adjustments for prior year delinquent taxes.

Lease Revenue – \$863K recorded for Seton lease payment and the UT ground lease.

Other Revenue – \$48K investment income for the month, \$124k YTD, compared to \$283k YTD last year.

**Uses of Funds – Total \$8.8M for the month**

Total Healthcare Delivery Program – Total healthcare delivery expenses were \$8.1M for the month and \$16M YTD compared to \$24M YTD thru November 2019.

Administration Program – \$519K in expense for the month, which includes:

- Personnel costs – \$359K
- Consulting services – \$18K
- Legal fees – \$71K
- Other general and administrative – \$70K

**Tax Collection Expenses** – \$120K for the month.

**Excess Sources/(Uses)** – \$(5.7)M in November. Current YTD is \$(13)M compared to prior year FY20 YTD of \$(14)M.



November 2020 Preliminary Monthly Financial Statements (unaudited)

Page 6 of 6

**Healthcare Delivery Expense** – Slide 7

**Healthcare Delivery Expense** – Total \$8.1M November; \$16M YTD compared to \$24M November FY20 YTD.

Intergovernmental Transfers (“IGT’s”) – YTD \$0 compared to \$7.3M YTD last year.

Healthcare Services – Healthcare delivery providers’ expense for November totaled \$5.6M, which includes:

- Primary care – \$4.4M
- Specialty Care (including Dental and Behavioral Health) – \$491K
- Pharmacy - \$628K
- All Other Healthcare Services - \$41K

ACA Premium Assist, Education, Enrollment – \$1M in expenses for the month; \$1.9M YTD compared to \$1.1M November FY20 YTD

Healthcare Facilities and Campus Redevelopment - \$256K in expense for the month and \$331K YTD.

Healthcare Delivery Operating Cost – \$1.3M in expenses for the month and includes:

- Personnel costs – \$876K
- Consulting Services – \$5K
- Legal Fees - \$7K
- Other services and purchased goods – \$375K

Debt, Reserves and Transfer – \$8K in Debt Service expense for the month

**Total Healthcare Delivery** - for the month of November was \$8.1M.



# Community Care Collaborative

## Financial Statement Presentation

### FY 2021 – as of November 30, 2020 (Preliminary)

---

**Central Health Board of Managers**  
**Board of Managers Meeting**  
**December 16, 2020**

**Jeff Knodel, Chief Financial Officer**  
**Lisa Owens, Deputy Chief Financial Officer**



a partnership of Central Health and Seton Healthcare Family

*Preliminary*

# Highlights Community Care Collaborative

November 2020



- \* Cash is at \$24.4 million compared to \$25.3 million last year.
- \* Total Liabilities are at \$11 million as of the end of November 2020.
- \* Net Assets at the end of September are \$13.4 million.

*Preliminary*

# Balance Sheet Community Care Collaborative

As of November 2020



## Community Care Collaborative

	as of 11/30/2020	as of 11/30/2019
<b>Assets</b>		
Cash and Cash Equivalents	24,408,872	25,325,793
Other Receivables	21,530	414,895
Prepaid and Other	86,878	52,133
Total Assets	<u>24,517,279</u>	<u>25,792,821</u>
<b>Liabilities</b>		
AP and Accrued Liabilities	6,435,567	11,767,319
Deferred Revenue	4,350,228	1,961,042
Other Liabilities	206,991	248,585
Accrued Payroll	117,403	102,603
Total Liabilities	<u>11,110,189</u>	<u>14,079,549</u>
Net Assets	<u>13,407,091</u>	<u>11,713,272</u>
Liabilities and Net Assets	<u>24,517,279</u>	<u>25,792,821</u>

*Preliminary*

# Sources and Uses Report, Budget vs Actual

## Fiscal Year-to-Date through November 2020



<b>Sources of Funds</b>	<b>Approved Budget</b>	<b>YTD Actual</b>	<b>YTD % of Budget</b>	<b>Prior YTD Actual</b>
DSRIP Revenue	61,168,472	0	0%	0
Member Payment - Seton <sup>(1)</sup>	0	0	0%	0
Member Payment - Central Health <sup>(1)</sup>	0	0	0%	0
Operations Contingency Carryforward	5,362,495	11,802,979	220%	10,731,787
Other Sources	100,000	4,300	4%	56,187
<b>Total Sources of Funds</b>	<b>66,630,967</b>	<b>11,807,279</b>	<b>18%</b>	<b>10,787,974</b>
<b>Uses - Programs</b>				
Healthcare Delivery	19,630,967	2,655,050	14%	3,578,393
UT Services Agreement	35,000,000	0	0%	0
DSRIP Project Costs	12,000,000	745,137	6%	496,309
<b>Total Uses</b>	<b>66,630,967</b>	<b>3,400,188</b>	<b>5%</b>	<b>4,074,702</b>
<b>Net Sources (Uses)</b>	<b>-</b>	<b>8,407,091</b>		<b>6,713,272</b>
<b>Net Assets</b>		<b>13,407,091</b>		<b>11,713,272</b>

<sup>(1)</sup> Final contributions will be subject to provisions of the MSA, which requires the parties to collaborate to adequately fund the CCC, but leaves the amount of funding up to each parties' discretion. Each member contribution could be more or less than the budget, depending upon a variety of factors.

*Preliminary*

# Healthcare Delivery Costs - Summary

Fiscal Year-to-Date through November 2020



	<u>Approved Budget</u>	<u>YTD Actual</u>	<u>YTD % of Budget</u>	<u>Prior YTD Actual</u>
<b>Healthcare Delivery</b>				
Primary Care & Emergency Transport	921,822	158,521	17%	153,637
Specialty Care	3,908,000	470,697	12%	630,263
Specialty Behavioral Health	8,000,000	1,344,000	17%	1,848,384
Specialty Dental Care	0	0	0%	0
Post-Acute Care	2,675,000	269,292	10%	391,667
Pharmacy	0	0	0%	0
Medical Management	0	0	0%	(1,567)
Urgent and Convenient Care	475,000	40,833	9%	58,977
Healthcare Delivery - Operations	2,849,742	371,708	13%	497,032
Operations Contingency Reserve	801,403	0	0%	0
<b>Total Healthcare Delivery</b>	<b>19,630,967</b>	<b>2,655,050</b>	<b>14%</b>	<b>3,578,393</b>

*Preliminary*

# Thank You

[www.ccc-ids.org](http://www.ccc-ids.org)

DRAFT



Community Care  
COLLABORATIVE

a partnership of Central Health and Seton Healthcare Family

*Preliminary*



November 2020 FYTD Financial Statements (unaudited)  
Page 1 of 4

## **Balance Sheet**

### **Current Assets**

Cash and Cash Equivalents – \$24.4M

Other Receivables – \$22K

Prepaid and Other – \$87K – Atrium Security deposit, Insurance, Rent, and MCG license

**Total Assets – \$24.5M**

### **Liabilities**

Accounts Payable and Accrued Liabilities – \$6.4M, which includes:

- \$5.1M estimated IBNR (Incurred But Not Received) for providers
- \$1.2M non-provider accruals mainly for PY DSRIP payments to CUC \$1.1M
- \$191K due to Central Health for July-November 2020

Deferred Revenue – \$4.3M deferred revenue related to DSRIP projects

Other Liabilities – \$207K; includes leasehold improvement allowance liability of \$78K and Deferred Rent of \$129K

Payroll Liabilities – \$117K; includes PTO liability

**Total Liabilities – \$11.1M**



November 2020 FYTD Financial Statements (unaudited)  
Page 2 of 4

**Net Assets**

Unrestricted Net Assets – \$13.4M

**Total Net Assets – \$13.4M**

**Total Liabilities and Net Assets – \$24.5M**

**Sources and Uses Report**

November financials → two months, 17% of the fiscal year

**Sources of Funds, Year-to-Date**

DSRIP Revenue - \$0M, anticipated receipt is July 2021

Operations Contingency - \$11.8M from FY2020 (This excludes emergency reserves of \$5M)

Other Sources – \$4K for interest income



**Uses of Funds, Year-to-Date**

Operating Expenses  
Healthcare Delivery  
(Excluding DSRIP)

	<u>Approved Budget</u>	<u>YTD Actual</u>	<u>YTD % of Budget</u>	<u>Prior YTD Actual</u>
<b>Healthcare Delivery</b>				
Primary Care & Emergency Transport	921,822	158,521	17%	153,637
Specialty Care	3,908,000	470,697	12%	630,263
Specialty Behavioral Health	8,000,000	1,344,000	17%	1,848,384
Specialty Dental Care	0	0	0%	0
Post-Acute Care	2,675,000	269,292	10%	391,667
Pharmacy	0	0	0%	0
Medical Management	0	0	0%	(1,567)
Urgent and Convenient Care	475,000	40,833	9%	58,977
Healthcare Delivery - Operations	2,849,742	371,708	13%	497,032
Operations Contingency Reserve	801,403	0	0%	0
<b>Total Healthcare Delivery</b>	<b>19,630,967</b>	<b>2,655,050</b>	<b>14%</b>	<b>3,578,393</b>

\*BOARD PACKET\*



November 2020 FYTD Financial Statements (unaudited)  
Page 4 of 4

UT Services Agreement – Year-to-date \$0M

DSRIP Project Costs – Year-to-date \$745M, primarily made up of provider earnings to date of:

- Community Care - \$720K
- Lone Star Circle of Care – (\$17K)
- Hospice Austin – (\$1K)
- DSRIP Operating Expenses - \$43K

\*BOARD PACKET\*



CENTRAL HEALTH

**Our Vision**

Central Texas is a model healthy community.

**Our Mission**

By caring for those who need it most, Central Health improves the health of our community.

**Our Values**

Central Health will achieve excellence through:

*Stewardship* - We maintain public trust through fiscal discipline and open and transparent communication.

*Innovation* - We create solutions to improve healthcare access.

*Respect* - We honor our relationship with those we serve and those with whom we work.

*Collaboration* - We partner with others to improve the health of our community.

**BOARD MEETING**

**December 16, 2020**

**AGENDA ITEM C3**

Approve the reappointment of Pilar Sanchez and Tom Coopwood, M.D., to the CommUnityCare Health Centers Board of Directors as recommended by the Executive Committee.



## MEMORANDUM

**To:** Central Health Board of Managers  
**From:** Perla Cavazos, Deputy Administrator and Briana Yanes, Board Governance Manager  
**Cc:** Mike Geeslin, President & CEO  
**Date:** December 11, 2020  
**Re:** Review and take appropriate action on the reappointment of Pilar Sanchez and Tom Coopwood, M.D., to the CommUnityCareHealth Centers Board of Directors. ***ACTION ITEM***

---

### Overview

Central Health appoints two members to the CommUnityCare Board of Directors who serve as compliments to the consumer representatives on the CommUnityCare Board. Central Health staff recommends the reappointment of Pilar Sanchez and Dr. Tom Coopwood to the CommUnityCare Board of Directors for an additional term of two years.

### Synopsis

Pilar Sanchez has served on the CommUnityCare Board of Directors since May 2019, filling the seat previously held by Fletcher Brown. Dr. Tom Coopwood has served on the CommUnityCare Board of Directors since January 2016 and was elected Chair in February of 2020.

### Biographical Information

#### Pilar Sanchez

Pilar Sanchez is a Vice President at the Housing Authority of the City of Austin (HACA), where she has served the most vulnerable residents of Austin for over 19 years, overseeing 80 employees who provide housing to over 4,300 individuals nightly at 18 public housing sites. Prior to this position, Pilar held many roles at HACA that helped support the growth and expansion of what it has become today.

Pilar is also recognized in our community as a recipient of many awards including: 2018 GAHCC Award for Latina Leader in Housing Industry, 2011 Community Leadership Circle Award from UT Austin, 2012 Trailblazer by the El Paso Social Network, 2010 Woman of the Year award from the YWCA as the "Leader of Promise", and the 2009 GAHCC Chair's award.

Pilar was born and raised in El Paso, Texas and moved to Austin in 1989 to attend the University of Texas. Ms. Sanchez has a Bachelor of Arts degree in Government from the University of Texas at Austin, and an Executive Masters in Public Leadership from the UT LBJ School of Public Affairs.

Thomas B. Coopwood, MD

Dr. Coopwood was born and raised in Lockhart, Texas and is a 1956 graduate of Lockhart High School. Dr. Coopwood attended UT Austin from 1956 to 1959 for a pre-medical degree and received a BA in Plan 2. After graduating from Baylor College of Medicine in 1963 and completing an internship, Dr. Coopwood spent 2 years in the US Air Force before returning to Baylor to complete a General Surgery residency in 1970.

He practiced General and Trauma Surgery in Austin from 1970-2003, and was on the staff of both Seton and St. David's hospital systems. He was Chief of Surgery at Brackenridge for 4 years (1980-85) and the Chief of Medical Staff (1986). He also was President of the Travis County Medical Society (1995).

Dr. Coopwood was Physician of the Year at Brackenridge (1988) and the Travis County Medical Society (2004). He was named by Austin Business Journal as a Healthcare Hero (2011).

Dr. Coopwood has been active in the community. He served on the Northwest Austin Civic Association Board as Vice President from 2009-2013. He served as a Member of the Board of Managers of Central Health from 2004-2015, including Board Chair for 3 years, and also served on the Mayor's Taskforce on Aging and the Commission for Aging for one year.

**Fiscal Impact:**

No fiscal impact anticipated.

**Recommendation**

Staff recommends that the Board of Managers approve the reappointment of Pilar Sanchez and Dr. Tom Coopwood to the CommUnityCare Board of Directors.



## CENTRAL HEALTH

### **Our Vision**

Central Texas is a model healthy community.

### **Our Mission**

By caring for those who need it most, Central Health improves the health of our community.

### **Our Values**

Central Health will achieve excellence through:

*Stewardship* - We maintain public trust through fiscal discipline and open and transparent communication.

*Innovation* - We create solutions to improve healthcare access.

*Respect* - We honor our relationship with those we serve and those with whom we work.

*Collaboration* - We partner with others to improve the health of our community.

## **BOARD MEETING**

**December 16, 2020**

## **REGULAR AGENDA ITEM 1**

Discuss and take appropriate action on the proposed mandatory payment rate to be assessed on institutional healthcare providers during fiscal year 2021 under the local healthcare provider participation program (LPPF) in Travis County, and how the revenue derived from those payments is to be spent, as required by Texas Health & Safety Code §298E.151.



**CENTRAL  
HEALTH**

---

# Travis County LPPF: FY 21 Proposed Mandatory Payment Rate

---

**DEC. 16, 2020**

Central Health Board of Managers Meeting

---

**PRESENTER**

**Katie Coburn, RHP Director**

# Proposed Payment Rate for FY 2021

- **Proposed FY 2021 LPPF Payment Rate: 1.66% of net patient revenue**
- **Generates approximately \$58 million in local funds to be used for intergovernmental transfers**
- **Provides the local portion for:**
  - FY 21 Uncompensated Care (UC) Payments
  - Additional UC payments previously withheld due to CHAT lawsuit
  - UHRIP Program Year 5 Advance Payment
- **Staff anticipates amending rate later in the year once additional information is available from HHSC**







## CENTRAL HEALTH

### **Our Vision**

Central Texas is a model healthy community.

### **Our Mission**

By caring for those who need it most, Central Health improves the health of our community.

### **Our Values**

Central Health will achieve excellence through:

*Stewardship* - We maintain public trust through fiscal discipline and open and transparent communication.

*Innovation* - We create solutions to improve healthcare access.

*Respect* - We honor our relationship with those we serve and those with whom we work.

*Collaboration* - We partner with others to improve the health of our community.

## **BOARD MEETING**

**December 16, 2020**

## **REGULAR AGENDA ITEM 2**

Discuss and take appropriate action on the Fiscal Year (FY) 2021 budget for Sendero Health Plans, Inc.<sup>3</sup>



**SENDERO  
HEALTH PLANS**

**Central Health  
BOARD OF MANAGERS**

Open Session

December 16, 2020





# Financials Statutory with 2021 Budget

	<u>2019 FINAL</u>	<u>2020 BUDGET</u>	<u>2020</u>	<u>2021</u>	
	FINAL After Adjustments thru DECEMBER 2019 (July 20, 2020)	APPROVED BUDGET thru December 2020 (Oct 28, 2019)	PROJECTED thru DECEMBER 2020 (November 30, 2020)	PROJECTED thru DECEMBER 2021 (November 30, 2020)	<b>Notes</b>
Total Revenue	\$79,428,266	\$98,449,680	\$78,058,618	\$30,777,444	2020-21 Membership lower
Risk Adjustment	\$4,497,120	\$12,034,320	\$7,003,184	\$12,342,096	Changes in mix driving fluctuations
Total Revenue After Risk Adjustment	83,925,386	\$110,484,000	\$85,061,802	\$43,119,540	
Total Medical Expenses	\$61,392,436	\$86,729,940	72,936,427	\$29,923,235	2020: Driven by specialty and RX
Contribution to Overhead	\$22,532,950	\$23,754,060	\$12,125,374	\$13,196,305	2020 loss driven by Narrow Network, specialty, and Rx
Total Administrative Expenses	\$17,761,783	\$23,238,087	\$19,720,684	\$15,808,920	2021 reflects reductions
Net Income (loss)	<u>\$4,771,167</u>	<u>\$515,973</u>	<u>(\$7,595,310)</u>	<u>(\$2,612,615)</u>	2020 and 2021 reflect conservative projections
<i>Check Total</i>					
<b>Average Membership</b>	<b>12,632</b>	<b>16,500</b>	<b>12,907</b>	<b>4,500</b>	2020: 20% less than budget 2021: Conservative
<b>Member Months</b>	<b>151,579</b>	<b>198,000</b>	<b>154,889</b>	<b>54,000</b>	
<b>Admin as % of Revenues After Risk Adj</b>	<b>21%</b>	<b>21%</b>	<b>23%</b>	<b>37%</b>	
<b>Premium PMPM</b>	<b>\$553.67</b>	<b>\$558.00</b>	<b>\$549.18</b>	<b>\$798.51</b>	Average premiums higher due to more CHAP
<b>Claims PMPM</b>	<b>\$405.02</b>	<b>\$438.03</b>	<b>\$470.89</b>	<b>\$554.13</b>	Increase driven by CHAP expenses/Pharmacy and Specialty
<b>Admin PMPM</b>	<b>\$117.18</b>	<b>\$117.36</b>	<b>\$127.32</b>	<b>\$292.76</b>	Higher admin reflecting decreased membership
<b>Net Income/Loss PMPM</b>	<b>\$31.48</b>	<b>\$2.61</b>	<b>-\$49.04</b>	<b>-\$48.38</b>	



# Financial FY2021 Issues

**Sendero identified three main areas of opportunity to better align resources for 2021**

- **Specialty Care**

*Continued monitoring of increased utilization*

- **Pharmacy**

*2020 showed significantly higher pharmacy spending than last year, but similar number of members treated*

Therapeutic Classes driving higher costs YoY:

Antineoplastics

Antihyperglycemics

Blood

Immunosuppressants

Skin Preps

- **COVID-19**

*Continued high intensity outreach to high risk membership*





# CENTRAL HEALTH

## **Our Vision**

Central Texas is a model healthy community.

## **Our Mission**

By caring for those who need it most, Central Health improves the health of our community.

## **Our Values**

Central Health will achieve excellence through:

*Stewardship* - We maintain public trust through fiscal discipline and open and transparent communication.

*Innovation* - We create solutions to improve healthcare access.

*Respect* - We honor our relationship with those we serve and those with whom we work.

*Collaboration* - We partner with others to improve the health of our community.

## **BOARD MEETING**

**December 16, 2020**

## **REGULAR AGENDA ITEM 3**

Discuss and take appropriate action on Central Health owned or occupied real property and potential property for acquisition, lease, or development in Travis County, including possible amendment of the Ground Lease with the 2033 Higher Education Development Fund, next steps in the redevelopment of the Central Health Downtown Campus, administrative offices of Central Health Enterprise partners, and new developments in Eastern Travis County.<sup>4</sup>



# CENTRAL HEALTH

## **Our Vision**

Central Texas is a model healthy community.

## **Our Mission**

By caring for those who need it most, Central Health improves the health of our community.

## **Our Values**

Central Health will achieve excellence through:

*Stewardship* - We maintain public trust through fiscal discipline and open and transparent communication.

*Innovation* - We create solutions to improve healthcare access.

*Respect* - We honor our relationship with those we serve and those with whom we work.

*Collaboration* - We partner with others to improve the health of our community.

## **BOARD MEETING**

**December 16, 2020**

## **REGULAR AGENDA ITEM 4**

Receive and discuss the 1115 Medicaid Waiver, Delivery System Reform Incentive Payment (DSRIP) projects, the Community Care Collaborative, and other healthcare delivery partners, programs, projects, and arrangements, including agreements with Ascension Texas.<sup>5</sup>



MEMORANDUM

**To:** Central Health Board of Managers  
**From:** Perla Cavazos, Deputy Administrator  
**Cc:** Mike Geeslin, President & CEO  
**Date:** November 11, 2020  
**Re:** Informational - CommUnityCare and Sendero financials

---

**Overview:**

On a quarterly basis we will provide a summary of most recent financial statements for CommUnityCare Health Centers and Sendero Health Plans for informational purposes only.

If you have questions, please contact Briana Yanes or Perla Cavazos and they will schedule a meeting with Jeff Knodel, CFO.

**Action Requested:**

This is an informational item and requires no action.



## ASSETS

	Current Statement Date			4 December 31 Prior Year Net Admitted Assets
	1 Assets	2 Nonadmitted Assets	3 Net Admitted Assets (Cols. 1 - 2)	
1. Bonds				
2. Stocks:				
2.1 Preferred stocks				
2.2 Common stocks				
3. Mortgage loans on real estate:				
3.1 First liens				
3.2 Other than first liens				
4. Real estate:				
4.1 Properties occupied by the company (less \$ 0 encumbrances)				
4.2 Properties held for the production of income (less \$ 0 encumbrances)				
4.3 Properties held for sale (less \$ 0 encumbrances)				
5. Cash (\$ 30,608,276), cash equivalents (\$ 0), and short-term investments (\$ 414,157)	31,022,433		31,022,433	24,235,380
6. Contract loans (including \$ 0 premium notes)				
7. Derivatives				
8. Other invested assets				
9. Receivables for securities				
10. Securities lending reinvested collateral assets				
11. Aggregate write-ins for invested assets				
12. Subtotals, cash and invested assets (Lines 1 to 11)	31,022,433		31,022,433	24,235,380
13. Title plants less \$ 0 charged off (for Title insurers only)				
14. Investment income due and accrued	642		642	100,726
15. Premiums and considerations:				
15.1 Uncollected premiums and agents' balances in the course of collection	586		586	222,174
15.2 Deferred premiums, agents' balances and installments booked but deferred and not yet due (including \$ 0 earned but unbilled premiums)				
15.3 Accrued retrospective premiums (\$ 0) and contracts subject to redetermination (\$ 0)	9,635,420		9,635,420	8,425,091
16. Reinsurance:				
16.1 Amounts recoverable from reinsurers				232,585
16.2 Funds held by or deposited with reinsured companies				
16.3 Other amounts receivable under reinsurance contracts				
17. Amounts receivable relating to uninsured plans				
18.1 Current federal and foreign income tax recoverable and interest thereon				
18.2 Net deferred tax asset				
19. Guaranty funds receivable or on deposit				
20. Electronic data processing equipment and software				
21. Furniture and equipment, including health care delivery assets (\$ 0)				
22. Net adjustment in assets and liabilities due to foreign exchange rates				
23. Receivables from parent, subsidiaries and affiliates				
24. Health care (\$ 0) and other amounts receivable	935,758		935,758	554,648
25. Aggregate write-ins for other-than-invested assets	320,603	320,603		
26. Total assets excluding Separate Accounts, Segregated Accounts and Protected Cell Accounts (Lines 12 to 25)	41,915,442	320,603	41,594,839	33,770,604
27. From Separate Accounts, Segregated Accounts and Protected Cell Accounts				
28. Total (Lines 26 and 27)	41,915,442	320,603	41,594,839	33,770,604

DETAILS OF WRITE-IN LINES				
1101.				
1102.				
1103.				
1198. Summary of remaining write-ins for Line 11 from overflow page				
1199. Totals (Lines 1101 through 1103 plus 1198) (Line 11 above)				
2501. Prepaid expenses	320,603	320,603		
2502.				
2503.				
2598. Summary of remaining write-ins for Line 25 from overflow page				
2599. Totals (Lines 2501 through 2503 plus 2598) (Line 25 above)	320,603	320,603		

NONE

## LIABILITIES, CAPITAL AND SURPLUS

	Current Period			Prior Year
	1 Covered	2 Uncovered	3 Total	4 Total
1. Claims unpaid (less \$ 0 reinsurance ceded)	14,300,192		14,300,192	5,064,276
2. Accrued medical incentive pool and bonus amounts				
3. Unpaid claims adjustment expenses	111,424		111,424	111,424
4. Aggregate health policy reserves, including the liability of \$ 0 for medical loss ratio rebate per the Public Health Service Act				
5. Aggregate life policy reserves				
6. Property/casualty unearned premium reserve				
7. Aggregate health claim reserves				
8. Premiums received in advance	4,783,013		4,783,013	2,954,986
9. General expenses due or accrued	2,439,960		2,439,960	1,419,968
10.1 Current federal and foreign income tax payable and interest thereon (including \$ 0 on realized gains (losses))				
10.2 Net deferred tax liability				
11. Ceded reinsurance premiums payable				
12. Amounts withheld or retained for the account of others				
13. Remittances and items not allocated				
14. Borrowed money (including \$ 0 current) and interest thereon \$ 0 (including \$ 0 current)				
15. Amounts due to parent, subsidiaries and affiliates	598,727		598,727	507,896
16. Derivatives				
17. Payable for securities				
18. Payable for securities lending				
19. Funds held under reinsurance treaties (with \$ 0 authorized reinsurers, \$ 0 unauthorized reinsurers, and \$ 0 certified reinsurers)				
20. Reinsurance in unauthorized and certified (\$ 0) companies				
21. Net adjustments in assets and liabilities due to foreign exchange rates				
22. Liability for amounts held under uninsured plans				
23. Aggregate write-ins for other liabilities (including \$ 0 current)	2,736,217		2,736,217	1,351,693
24. Total liabilities (Lines 1 to 23)	24,969,533		24,969,533	11,410,243
25. Aggregate write-ins for special surplus funds	X X X	X X X		
26. Common capital stock	X X X	X X X		
27. Preferred capital stock	X X X	X X X		
28. Gross paid in and contributed surplus	X X X	X X X	71,000,000	71,000,000
29. Surplus notes	X X X	X X X	37,083,000	37,083,000
30. Aggregate write-ins for other than special surplus funds	X X X	X X X		
31. Unassigned funds (surplus)	X X X	X X X	(91,457,694)	(85,722,640)
32. Less treasury stock, at cost:				
32.1 0 shares common (value included in Line 26 \$ 0)	X X X	X X X		
32.2 0 shares preferred (value included in Line 27 \$ 0)	X X X	X X X		
33. Total capital and surplus (Lines 25 to 31 minus Line 32)	X X X	X X X	16,625,306	22,360,360
34. Total liabilities, capital and surplus (Lines 24 and 33)	X X X	X X X	41,594,839	33,770,603

DETAILS OF WRITE-IN LINES				
2301. ACA Risk Adjustment liability RADV	2,736,217		2,736,217	1,351,693
2302.				
2303.				
2398. Summary of remaining write-ins for Line 23 from overflow page				
2399. Totals (Lines 2301 through 2303 plus 2398) (Line 23 above)	2,736,217		2,736,217	1,351,693
2501.	X X X	X X X		
2502.	X X X	X X X		
2503.	X X X	X X X		
2598. Summary of remaining write-ins for Line 25 from overflow page	X X X	X X X		
2599. Totals (Lines 2501 through 2503 plus 2598) (Line 25 above)	X X X	X X X		
3001.	X X X	X X X		
3002.	X X X	X X X		
3003.	X X X	X X X		
3098. Summary of remaining write-ins for Line 30 from overflow page	X X X	X X X		
3099. Totals (Lines 3001 through 3003 plus 3098) (Line 30 above)	X X X	X X X		

NONE

NONE

## STATEMENT OF REVENUE AND EXPENSES

	Current Year		Prior Year	Prior Year Ended
	To Date		To Date	December 31
	1 Uncovered	2 Total	3 Total	4 Total
1. Member Months	X X X	117,431	122,312	155,070
2. Net premium income (including \$ 0 non-health premium income)	X X X	69,994,412	64,602,645	83,643,024
3. Change in unearned premium reserves and reserve for rate credits	X X X			
4. Fee-for-service (net of \$ 0 medical expenses)	X X X			
5. Risk revenue	X X X			
6. Aggregate write-ins for other health care related revenues	X X X			
7. Aggregate write-ins for other non-health revenues	X X X			
8. Total revenues (Lines 2 to 7)	X X X	69,994,412	64,602,645	83,643,024
<b>Hospital and Medical:</b>				
9. Hospital/medical benefits		39,085,259	33,938,517	40,119,367
10. Other professional services			635	635
11. Outside referrals				
12. Emergency room and out-of-area		9,878,190	8,058,575	9,892,817
13. Prescription drugs		12,775,240	8,368,366	11,817,286
14. Aggregate write-ins for other hospital and medical				
15. Incentive pool, withhold adjustments and bonus amounts				
16. Subtotal (Lines 9 to 15)		61,738,689	50,366,093	61,830,105
<b>Less:</b>				
17. Net reinsurance recoveries		40,305	206,150	437,668
18. Total hospital and medical (Lines 16 minus 17)		61,698,384	50,159,943	61,392,437
19. Non-health claims (net)				
20. Claims adjustment expenses, including \$ 0 cost containment expenses		3,534,762	3,285,223	4,529,705
21. General administrative expenses		11,326,444	9,663,276	13,232,078
22. Increase in reserves for life and accident and health contracts (including \$ 0 increase in reserves for life only)				
23. Total underwriting deductions (Lines 18 through 22)		76,559,590	63,108,442	79,154,220
24. Net underwriting gain or (loss) (Lines 8 minus 23)	X X X	(6,565,178)	1,494,203	4,488,804
25. Net investment income earned		491,495	239,450	282,362
26. Net realized capital gains (losses) less capital gains tax of \$ 0				
27. Net investment gains (losses) (Lines 25 plus 26)		491,495	239,450	282,362
28. Net gain or (loss) from agents' or premium balances charged off [ (amount recovered \$ 0) (amount charged off \$ 0) ]				
29. Aggregate write-ins for other income or expenses				
30. Net income or (loss) after capital gains tax and before all other federal income taxes (Lines 24 plus 27 plus 28 plus 29)	X X X	(6,073,683)	1,733,653	4,771,166
31. Federal and foreign income taxes incurred	X X X			
32. Net income (loss) (Lines 30 minus 31)	X X X	(6,073,683)	1,733,653	4,771,166

DETAILS OF WRITE-IN LINES				
0601. ASO Management revenues net of expenses	X X X			
0602.	X X X			
0603.	X X X			
0698. Summary of remaining write-ins for Line 06 from overflow page	X X X			
0699. Totals (Lines 0601 through 0603 plus 0698) (Line 06 above)	X X X			
0701.	X X X			
0702.	X X X			
0703.	X X X			
0798. Summary of remaining write-ins for Line 07 from overflow page	X X X			
0799. Totals (Lines 0701 through 0703 plus 0798) (Line 07 above)	X X X			
1401.				
1402.				
1403.				
1498. Summary of remaining write-ins for Line 14 from overflow page				
1499. Totals (Lines 1401 through 1403 plus 1498) (Line 14 above)				
2901.				
2902.				
2903.				
2998. Summary of remaining write-ins for Line 29 from overflow page				
2999. Totals (Lines 2901 through 2903 plus 2998) (Line 29 above)				

NONE

NONE

NONE

**STATEMENT OF REVENUE AND EXPENSES (Continued)**

	1	2	3
	Current Year To Date	Prior Year To Date	Prior Year Ended December 31
<b>CAPITAL &amp; SURPLUS ACCOUNT</b>			
33. Capital and surplus prior reporting year	22,360,361	13,101,373	13,101,373
34. Net income or (loss) from Line 32	(6,073,683)	1,733,653	4,771,166
35. Change in valuation basis of aggregate policy and claim reserves			
36. Change in net unrealized capital gains (losses) less capital gains tax of \$ 0			
37. Change in net unrealized foreign exchange capital gain or (loss)			
38. Change in net deferred income tax			
39. Change in nonadmitted assets	338,628	252,301	(151,044)
40. Change in unauthorized and certified reinsurance			
41. Change in treasury stock			
42. Change in surplus notes			
43. Cumulative effect of changes in accounting principles		5,050,000	
44. Capital Changes:			
44.1 Paid in			
44.2 Transferred from surplus (Stock Dividend)			
44.3 Transferred to surplus			
45. Surplus adjustments:			
45.1 Paid in			
45.2 Transferred to capital (Stock Dividend)			
45.3 Transferred from capital			
46. Dividends to stockholders			
47. Aggregate write-ins for gains or (losses) in surplus			4,638,866
48. Net change in capital and surplus (Lines 34 to 47)	(5,735,055)	7,035,954	9,258,988
49. Capital and surplus end of reporting period (Line 33 plus 48)	16,625,306	20,137,327	22,360,361

<b>DETAILS OF WRITE-IN LINES</b>			
4701. Correction of misstatement			4,638,866
4702.			
4703.			
4798. Summary of remaining write-ins for Line 47 from overflow page			
4799. Totals (Lines 4701 through 4703 plus 4798) (Line 47 above)			4,638,866

**Balance Sheet**  
**As of 10/31/20**

	Oct-20	Sep-20	Variance	Sep-20	Variance
<b>Assets</b>					
<b>Current Assets</b>					
Cash & Cash Equivalents	23,948,111	26,236,954	(2,288,843)	26,236,954	(2,288,843)
Marketable Securities/Short Term Inv	2,893,067	2,889,507	3,560	2,889,507	3,560
<b>Accounts Receivable</b>					
Patient Accounts Receivable	7,927,763	5,704,418	2,223,345	5,704,418	2,223,345
DSRIP Accrual Receivable	827,824	423,830	403,994	423,830	403,994
Grants Receivable	1,892,355	1,336,082	556,273	1,336,082	556,273
Pharmacy Receivable	3,294,245	2,787,347	506,898	2,787,347	506,898
Non Patient AR	2,063,759	2,913,394	(849,635)	2,913,394	(849,635)
<b>Total Accounts Receivable</b>	<b>16,005,946</b>	<b>13,165,071</b>	<b>2,840,875</b>	<b>13,165,071</b>	<b>2,840,875</b>
Inventories	440,091	479,473	(39,382)	479,473	(39,382)
Prepaid Expenses	656,183	459,328	196,855	459,328	196,855
<b>Total Current Assets</b>	<b>43,943,398</b>	<b>43,230,333</b>	<b>713,065</b>	<b>43,230,333</b>	<b>713,065</b>
<b>Long-term Assets</b>					
Property & Equipment	1,456,992	7,125,989	(5,668,997)	7,125,989	(5,668,997)
Goodwill	6,960,245	1,412,400	5,547,845	1,412,400	5,547,845
<b>Total Long-term Assets</b>	<b>8,417,237</b>	<b>8,538,389</b>	<b>(121,152)</b>	<b>8,538,389</b>	<b>(121,152)</b>
<b>Total Assets</b>	<b>52,360,635</b>	<b>51,768,722</b>	<b>591,913</b>	<b>51,768,722</b>	<b>591,913</b>
<b>Liabilities</b>					
<b>Short-term Liabilities</b>					
Accounts Payable	3,996,281	4,384,594	(388,313)	4,384,594	(388,313)
Accrued Payroll Liabilities	1,566,938	1,861,096	(294,158)	1,861,096	(294,158)
Accrued Compensated Absences	4,041,509	3,883,118	158,391	3,883,118	158,391
<b>Deferred Revenue</b>					
Deferred Rev DSRIP FY16 DY5	368,716	368,716	0	368,716	0
Other Deferred	1,589,836	1,263,920	325,916	1,263,920	325,916
<b>Total Deferred Revenue</b>	<b>1,958,552</b>	<b>1,632,636</b>	<b>325,916</b>	<b>1,632,636</b>	<b>325,916</b>
<b>Other Short-term Liabilities</b>	<b>1,819,094</b>	<b>1,321,957</b>	<b>497,137</b>	<b>1,321,957</b>	<b>497,137</b>
Current Portion due to TCHD/CH	1,391,346	900,745	490,601	900,745	490,601
<b>Total Short-term Liabilities</b>	<b>14,773,720</b>	<b>13,984,146</b>	<b>789,574</b>	<b>13,984,146</b>	<b>789,574</b>
<b>Long-term Liabilities</b>					
Long-term Liabilities	5,225,000	5,320,000	(95,000)	5,320,000	(95,000)
Long-term Portion due to TCHD/CH	4,000,000	4,000,000	0	4,000,000	0
<b>Total Long-term Liabilities</b>	<b>9,225,000</b>	<b>9,320,000</b>	<b>(95,000)</b>	<b>9,320,000</b>	<b>(95,000)</b>
<b>Total Liabilities</b>	<b>23,998,720</b>	<b>23,304,146</b>	<b>694,574</b>	<b>23,304,146</b>	<b>694,574</b>
<b>Net Assets</b>					
<b>Beginning Net Assets</b>					
Net Assets	20,497,143	13,127,217	7,369,926	13,127,217	7,369,926
Board Restricted Operating Reserve	7,000,000	7,000,000	0	7,000,000	0
Current YTD Net Income	864,772	8,337,359	(7,472,587)	8,337,359	(7,472,587)
<b>Total Net Assets</b>	<b>28,361,915</b>	<b>28,464,576</b>	<b>(102,661)</b>	<b>28,464,576</b>	<b>(102,661)</b>
<b>Total Liabilities and Net Assets</b>	<b>52,360,635</b>	<b>51,768,722</b>	<b>591,913</b>	<b>51,768,722</b>	<b>591,913</b>

CommUnityCare  
Statement of Revenue and Expense  
For the Month Ended October 31, 2020

	MTD				YTD Variance				
	Current Actual	Current Budget	MTD Variance	Variance	YTD Actual	YTD Budget	YTD Variance	Percent	Prior Year Actual
<b>Patient Service Revenue</b>									
Medicare	219,471	211,981	7,490	3.53%	219,471	211,981	7,490	3.53%	103,936
Medicaid	3,405,099	3,023,002	382,097	12.63%	3,405,099	3,023,002	382,097	12.63%	1,384,957
CHIP	292,530	400,021	(107,491)	(26.87)%	292,530	400,021	(107,491)	(26.87)%	438,228
MAP	119,414	192,986	(73,572)	(38.12)%	119,414	192,986	(73,572)	(38.12)%	1,279,228
SFS	57,684	213,581	(155,897)	(72.99)%	57,684	213,581	(155,897)	(72.99)%	1,508,719
Insurance	265,028	174,511	90,517	51.86%	265,028	174,511	90,517	51.86%	123,547
Family Planning/Other	410,905	104,491	306,414	293.24%	410,905	104,491	306,414	293.24%	60,772
CH Indigent Care	1,978,069	2,197,854	(219,785)	(9.99)%	1,978,069	2,197,854	(219,785)	(9.99)%	-
Allowance for Bad Debt	(83,982)	(318,689)	234,707	(73.64)%	(83,982)	(318,689)	234,707	(73.64)%	36,573
<b>Total Third Party Revenue</b>	<b>6,664,218</b>	<b>6,199,738</b>	<b>464,480</b>	<b>0.00</b>	<b>6,664,218</b>	<b>6,199,738</b>	<b>464,480</b>	<b>0.00</b>	<b>4,935,960</b>
Pharmacy Network	2,466,666	2,083,333	383,333	18.39%	2,466,666	2,083,333	383,333	18.39%	1,296,254
<b>Total Patient Service Revenue</b>	<b>9,130,885</b>	<b>8,283,071</b>	<b>847,814</b>	<b>10.24%</b>	<b>9,130,885</b>	<b>8,283,071</b>	<b>847,814</b>	<b>10.24%</b>	<b>6,232,215</b>
<b>Grant Revenue</b>									
Other Grants	1,644,631	1,850,495	(205,864)	(11.12)%	1,644,631	1,850,495	(205,864)	(11.12)%	829,426
<b>Total Grant Revenue</b>	<b>1,644,631</b>	<b>1,850,495</b>	<b>(205,864)</b>	<b>(11.12)%</b>	<b>1,644,631</b>	<b>1,850,495</b>	<b>(205,864)</b>	<b>(11.12)%</b>	<b>829,426</b>
<b>Other Revenue</b>									
CH Contract	1,577,404	1,577,404	-	0.00%	1,577,404	1,577,404	-	0.00%	1,242,671
Other	125,000	147,167	(22,167)	(15.06)%	125,000	147,167	(22,167)	(15.06)%	-
DSRIP Revenue	403,994	732,920	(328,926)	(44.87)%	403,994	732,920	(328,926)	(44.87)%	844,774
<b>Total Other Revenue</b>	<b>2,106,398</b>	<b>2,457,491</b>	<b>(351,093)</b>	<b>(14.29)%</b>	<b>2,106,398</b>	<b>2,457,491</b>	<b>(351,093)</b>	<b>(14.29)%</b>	<b>2,087,445</b>
<b>Total Revenue</b>	<b>12,881,914</b>	<b>12,591,057</b>	<b>290,857</b>	<b>2.31%</b>	<b>12,881,914</b>	<b>12,591,057</b>	<b>290,857</b>	<b>2.31%</b>	<b>9,149,085</b>
<b>Expenditures</b>									
Salaries and Benefits	7,802,805	8,986,460	1,183,655	(13.17)%	7,802,805	8,986,460	1,183,655	(13.17)%	6,244,529
Contract Labor	432,171	391,002	(41,169)	10.52%	432,171	391,002	(41,169)	10.52%	505,959
Total Direct Care Expense	2,266,298	1,838,869	(427,429)	23.24%	2,266,298	1,838,869	(427,429)	23.24%	1,403,013
Indirect Expense	1,519,429	1,773,704	254,275	(14.34)%	1,519,429	1,773,704	254,275	(14.34)%	1,113,201
<b>Total Expenditures</b>	<b>12,020,703</b>	<b>12,990,036</b>	<b>969,333</b>	<b>(7.46)%</b>	<b>12,020,703</b>	<b>12,990,036</b>	<b>969,333</b>	<b>(7.46)%</b>	<b>9,266,702</b>
Excess (Deficit) From Operations	861,212	(398,979)	1,260,190	(315.85)%	861,212	(398,979)	1,260,190	(315.85)%	(117,617)
Non-Operating Revenue	3,560	-	3,560	0.00%	3,560	-	3,560	0.00%	-
<b>Excess (Deficit)</b>	<b>864,772</b>	<b>(398,979)</b>	<b>1,263,750</b>	<b>(316.74)%</b>	<b>864,772</b>	<b>(398,979)</b>	<b>1,263,750</b>	<b>(316.74)%</b>	<b>(117,617)</b>



# CENTRAL HEALTH

## **Our Vision**

Central Texas is a model healthy community.

## **Our Mission**

By caring for those who need it most, Central Health improves the health of our community.

## **Our Values**

Central Health will achieve excellence through:

*Stewardship* - We maintain public trust through fiscal discipline and open and transparent communication.

*Innovation* - We create solutions to improve healthcare access.

*Respect* - We honor our relationship with those we serve and those with whom we work.

*Collaboration* - We partner with others to improve the health of our community.

## **BOARD MEETING**

**December 16, 2020**

## **REGULAR AGENDA ITEM 5**

Receive briefing from legal counsel, consider any settlement offers, and take appropriate action regarding *Larimen Wallace v. Travis County Healthcare District d/b/a Central Health*, Cause No. D-1-GN-20-006645 (Travis County Dist. Ct.).<sup>5</sup>



CENTRAL HEALTH

**Our Vision**

Central Texas is a model healthy community.

**Our Mission**

By caring for those who need it most, Central Health improves the health of our community.

**Our Values**

Central Health will achieve excellence through:

*Stewardship* - We maintain public trust through fiscal discipline and open and transparent communication.

*Innovation* - We create solutions to improve healthcare access.

*Respect* - We honor our relationship with those we serve and those with whom we work.

*Collaboration* - We partner with others to improve the health of our community.

## **BOARD MEETING**

**December 16, 2020**

## **REGULAR AGENDA ITEM 6**

Confirm the next regular Board meeting date, time, and location.