

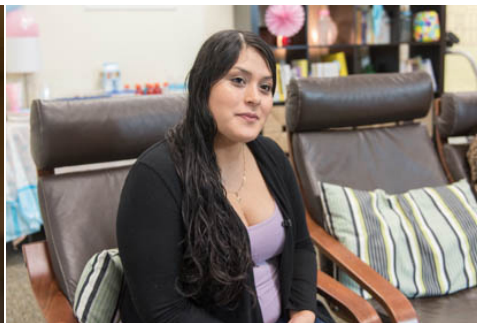


CENTRAL HEALTH

# Community Health Champions

Workshop I – Identifying Health Inequities  
in Travis County

February 15, 2018



# Central Health 101

1. Who we are
2. Central Health's history
3. Central Health as a taxing entity





CENTRAL HEALTH

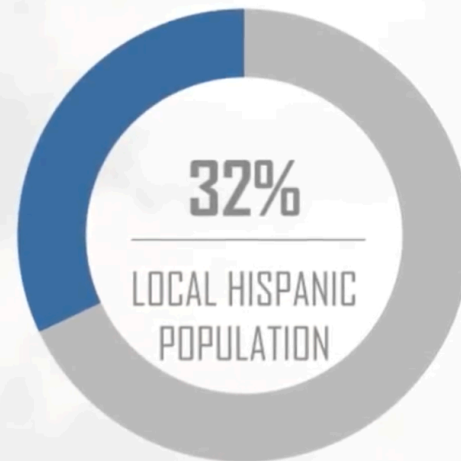
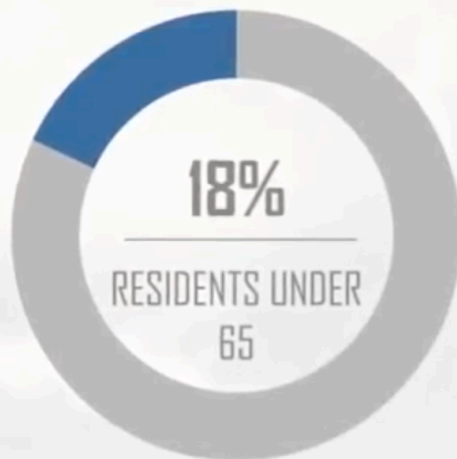
# UNINSURED RATES AMONG U.S. RESIDENTS

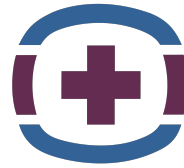
SOURCE: KAISER FAMILY FOUNDATION ANALYSIS



CENTRAL HEALTH

# UNINSURED RESIDENTS IN TRAVIS COUNTY





**CENTRAL HEALTH**  
HEALTH CARE FOR ALL

## **Vision**

Central Texas is a model Healthy Community

## **Mission**

By caring for those who need it most, Central Health improves the health of our community



CENTRAL HEALTH

# Our History



CENTRAL HEALTH

# Our History

2004



CENTRAL HEALTH  
HEALTH CARE FOR ALL

2013



A Central Health and Seton partnership

2009



2014



CENTRAL HEALTH  
BRACKENRIDGE CAMPUS

2011



2016



The University of Texas at Austin  
Dell Medical School

2012

Prop. 1

2017



**Seton Medical Center**  
at The University of Texas



CENTRAL HEALTH

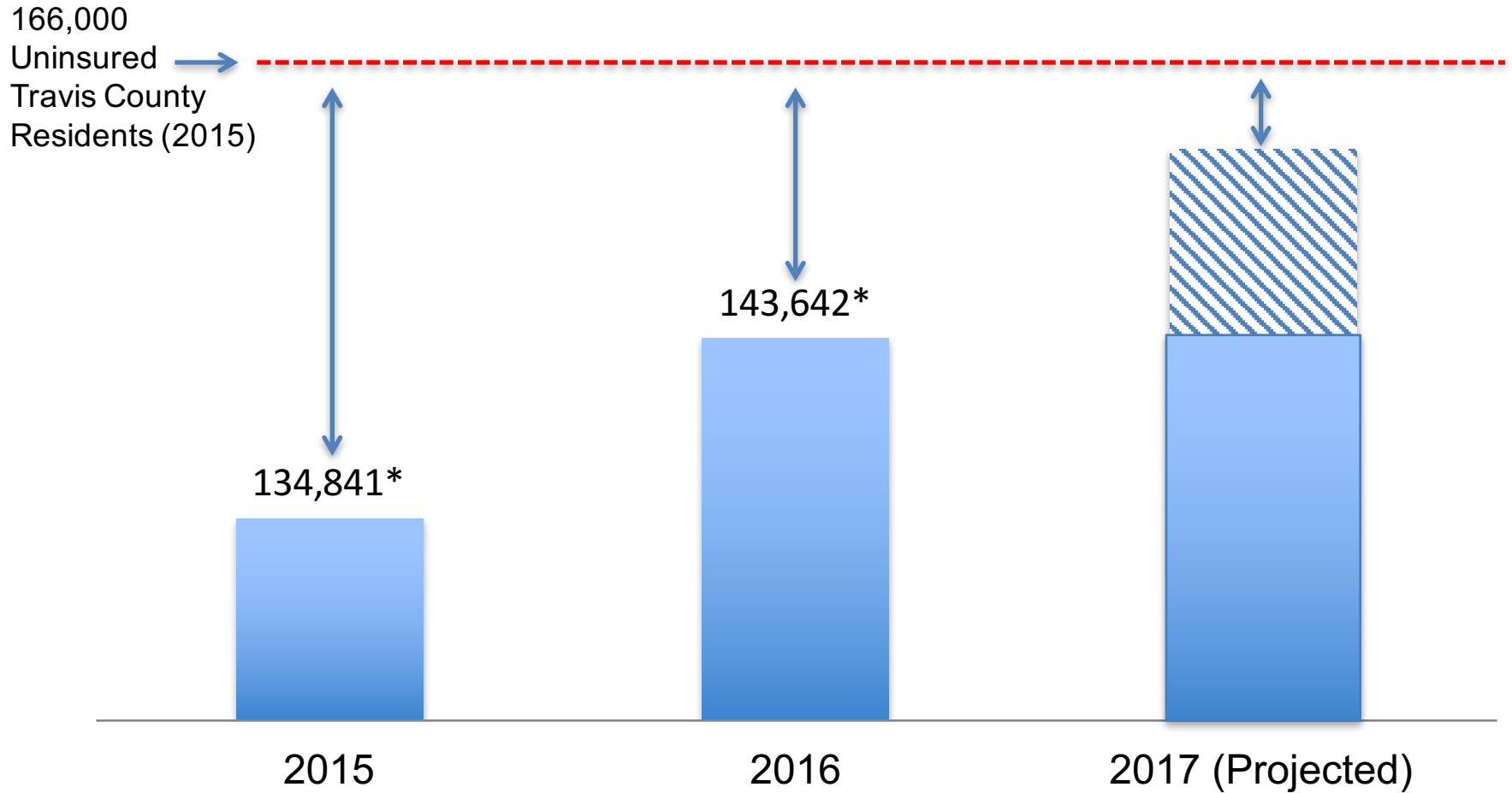


# Central Health Today



CENTRAL HEALTH

# Central Health's Impact



\*Includes CommUnityCare and CCC patients



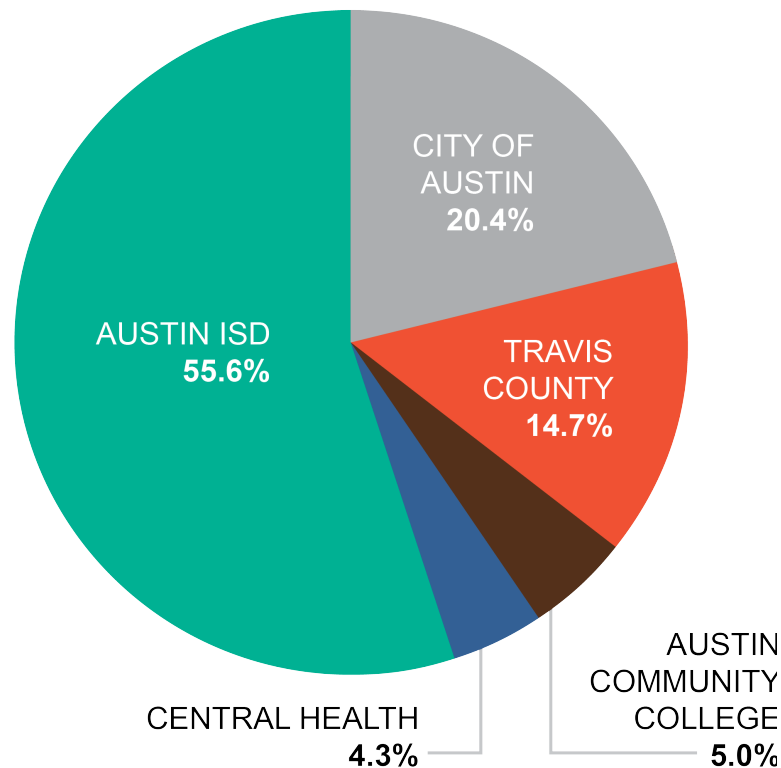
CENTRAL HEALTH

# Central Health as a taxing entity



# Where do our county taxes go?

Preliminary FY 2018 Travis County Tax Entity Percentages



# Funding a Healthy Community



# In Summary

1. Who we are
2. Central Health's history
3. Central Health as a taxing entity





CENTRAL HEALTH

(512) 978-8000

CentralHealth.net

@centralhealthtx

