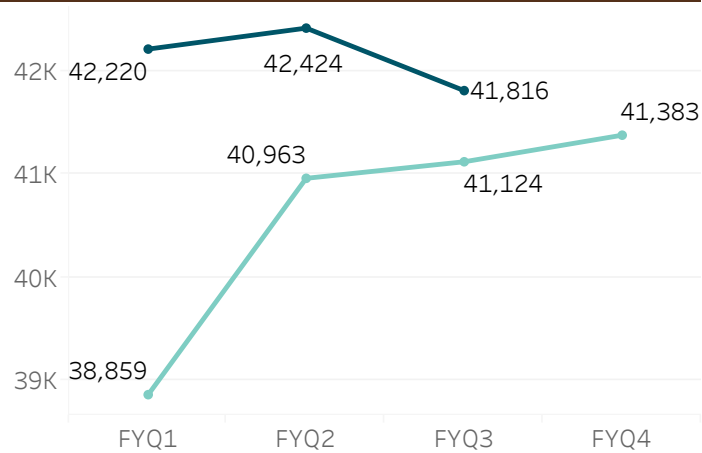
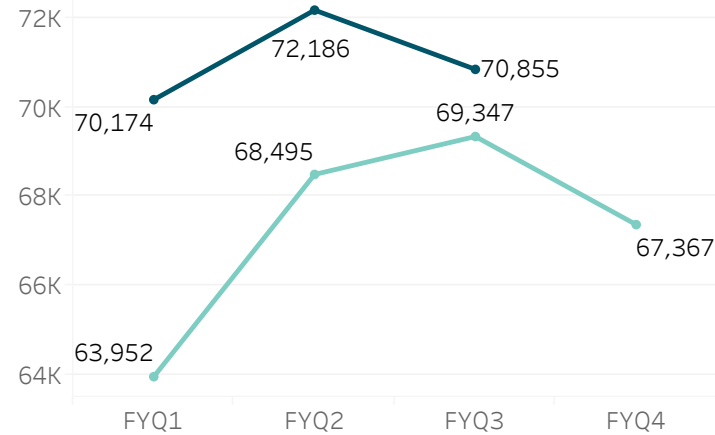


FY2018 CUC Preliminary Reporting - Medical and Behavioral Health Services

CUC Medical Patients



CUC Medical Encounters

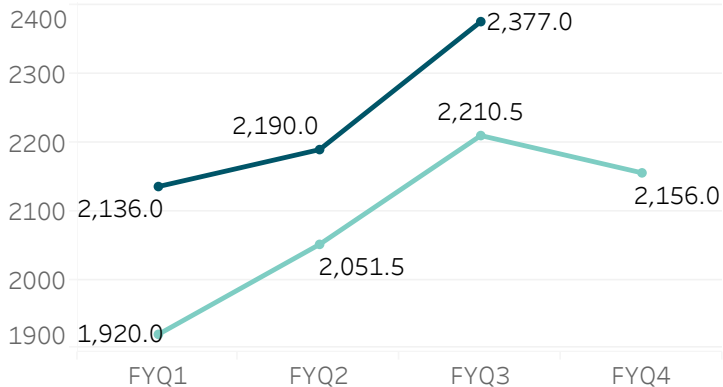


**CENTRAL
HEALTH**

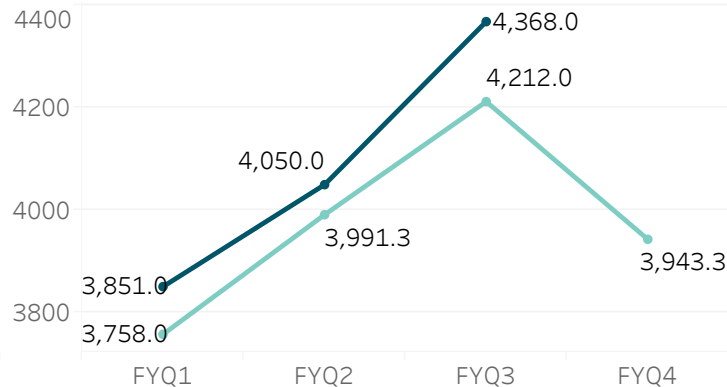
Legend
■ FY2015-2017 Average
■ FY2018

***Medical care summary:** The preliminary patient count for Q3, 2018 exceeded the two-year average by 692. Encounters for Q3, 2018 exceeded the three-year average by 1,508. The increased number of encounters in 2018 can be partially attributed to the implementation of new contracting to cover the costs of visits with nutritionists, clinical pharmacists, nurses and medical assistants.

CUC Behavioral Health Patients



CUC Behavioral Health Encounters



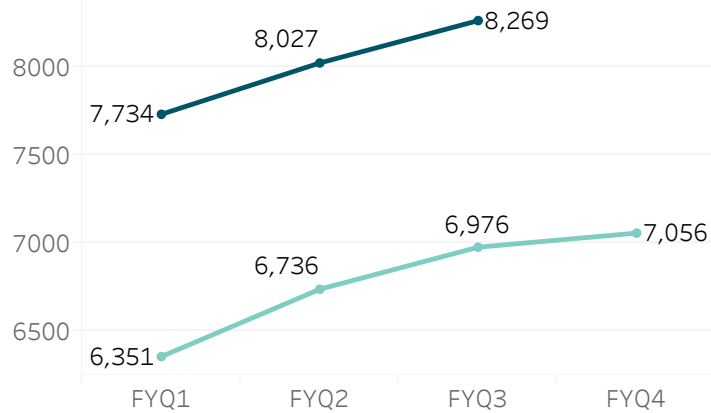
****Behavioral health care summary:** The preliminary patient count for Q3, 2018 exceeded the two-year average by 166.5. Encounters for Q3, 2018 exceeded the three-year average by 156.

FY2018 CUC Preliminary Reporting - Dental and Ancillary Services

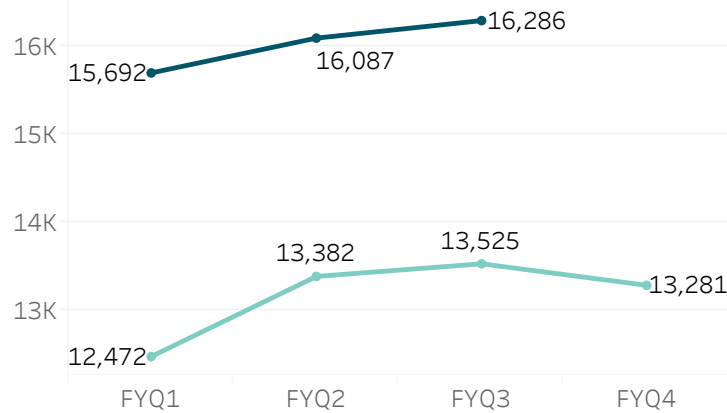


CENTRAL
HEALTH

CUC Dental Patients



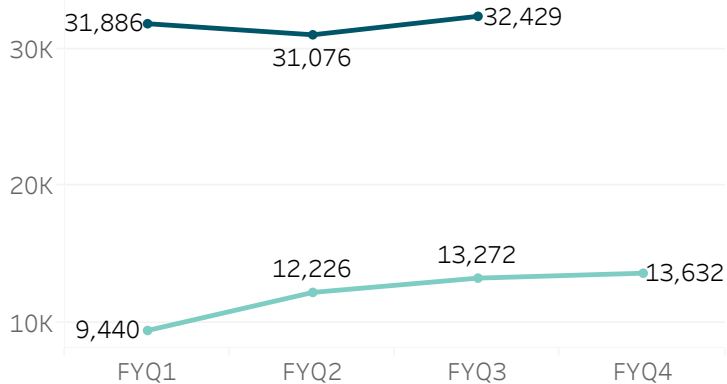
CUC Dental Encounters



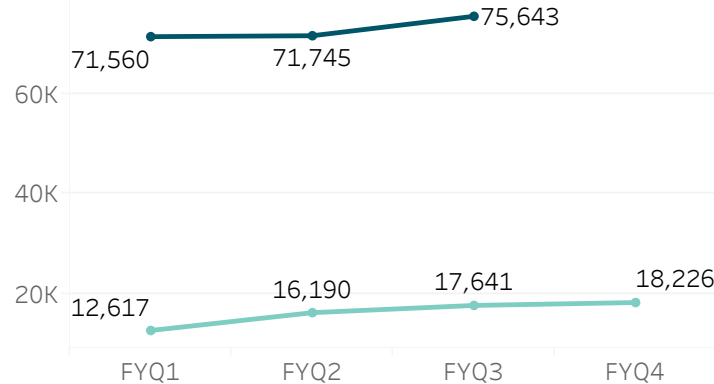
Legend
■ FY2015-2017 Average
■ FY2018

*****Dental care summary:** The preliminary patient count for Q3, 2018 exceeded the two-year average by 1,293. Encounters for Q3, 2018 exceeded the three-year average by 2,761.

CUC Ancillary Patients



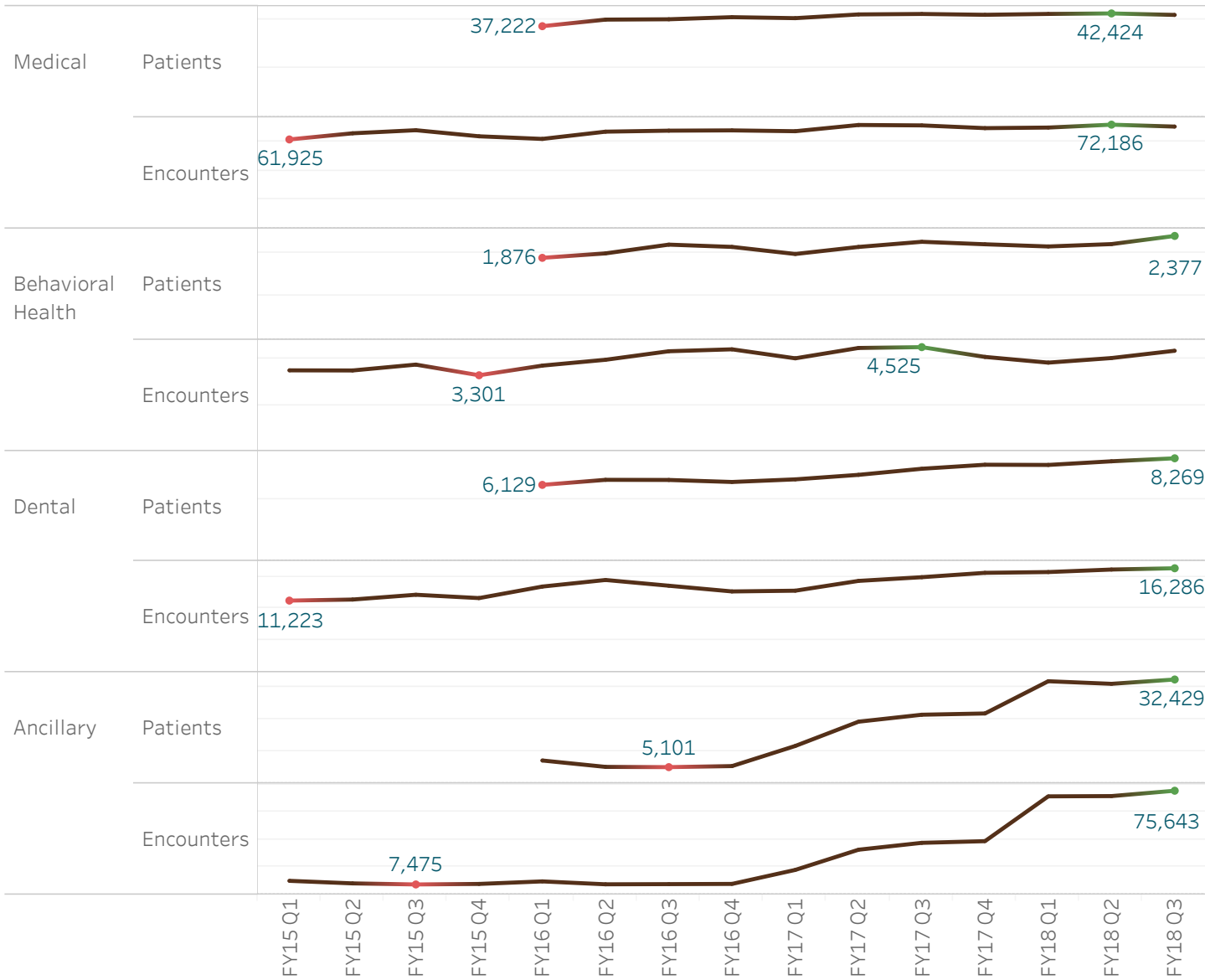
CUC Ancillary Encounters



*****Ancillary care summary:** The preliminary patient count for Q3, FY 2018 exceeded the two-year average by 19,157. Encounters for Q3, 2018 exceeded the three-year average by 58,002. The increased number of patients and encounters in 2018 can be partially attributed to the implementation of new contracting to cover the costs of visits with nutritionists, clinical pharmacists, nurses and respiratory therapists.

CommUnityCare Health Centers, Three-Year Trends

CUC Longitudinal Trends with Historical Highs and Lows



**CENTRAL
HEALTH**

***Notes:**

When multiple services are provided on the same day, each service is counted separately.

Medical care includes Primary Care and Specialty Care visits, such as cardiology, endocrinology, and dermatology.